

Article ID: 746
DOI: 10.5586/aa.746

Publication History
Received: 2020-10-02
Accepted: 2021-02-06
Published: 2021-05-19

Handling Editor
Barbara Łotocka; Warsaw
University of Life Sciences –
SGGW, Poland;
<https://orcid.org/0000-0001-5913-8424>

Authors' Contributions
TS: conceptualization, methodology, data analysis, writing the manuscript, photographs; GB: methodology, data analysis, writing the manuscript; EWC: data analysis, writing the manuscript; AS: data analysis, writing the manuscript





Funding
The authors wish to thank the Istanbul University for financial support (research projects BAP-IRP 55607).

Competing Interests
TS is a member of the Acta Agrobotanica Scientific Council; EWC is a honorary Editor of Acta Agrobotanica; AS is a secretary of the Acta Agrobotanica Editorial Council; GB: no competing interests have been declared

Copyright Notice
© The Author(s) 2021. This is an open access article distributed under the terms of the [Creative Commons Attribution License](#), which permits redistribution, commercial and noncommercial, provided that the article is properly cited.

ORIGINAL RESEARCH PAPER in PLANT STRUCTURE

Impact of Manganese on Pollen Germination and Tube Growth in Lily¹

Thomas Sawidis ¹, Gülriz Baycu ²,
Elżbieta Weryszko-Chmielewska ³, Aneta Sulborska ^{4*}

¹Department of Botany, University of Thessaloniki, 54124 Thessaloniki, Macedonia, Greece

²Botany Division, Department of Biology, Faculty of Science, Istanbul University, 34134 Istanbul, Turkey

³Department of Botany, University of Life Sciences in Lublin, 20-950 Lublin, Poland

⁴Faculty of Environmental Biology, University of Life Sciences in Lublin, 20-950 Lublin, Poland

* To whom correspondence should be addressed. Email: aneta.sulborska@up.lublin.pl

Abstract

In vitro culture of *Lilium longiflorum* pollen grains was carried out to determine the role of manganese in pollen germination and pollen tube growth. Pollen germination was adversely affected by the presence of manganese ($>10^{-8}$ M), whereas low concentrations (10^{-12} – 10^{-10} M) stimulated the process. Manganese caused morphological anomalies during tube growth, characterized by irregular pollen tube thickening and swollen tips. The main effect was the anomalous cell wall formation at the tip, in which the presence of several organelles reduced the number of secretory vesicles. A loose network of fibrillar material and spherical aggregates, mostly in the tip region, was detected, and this material was progressively loosened into the surrounding medium. As a response to potential toxicity, the excess manganese was isolated in vacuoles, which formed an internal barrier against penetration of manganese to the tip area. Elevated manganese concentrations might affect plant reproduction, resulting in anomalies in gamete development. Consequently, the loss in genetic diversity and decreased fruit set ultimately lower yield.

Keywords

Lilium; pollen tube; mitochondria; heavy metal; cell wall; dehydration; fertilization; internal barrier

1. Introduction

Pollen grains are found in the flower anthers, which are necessary for sexual reproduction in angiosperms. Estimation of pollen viability and vigor can be achieved by induction of in vitro pollen germination. Pollen grains are considered to be extremely minuscule systems combining anatomical simplicity with rapid growth rate of the pollen tube (Sawidis, 2008; Sawidis & Reiss, 1995). The process of pollen tube growth and elongation serves as an excellent model for studying plant cellular morphogenesis at the single-cell level. This process can be influenced by many external factors, including various toxic substances. The ability of pollen tubes to grow in vitro makes them a practical model for real-time testing of the effect of heavy metals on the ultrastructural level.

For many years, the pollen tube has been used as a well-suited model system for the evaluation of metal toxicity in plant cells (Gur & Topdemir, 2005; Sawidis et al., 2018). The effects of heavy metals on germinating pollen grain are one of the most interesting questions, and propagation experiments as well as studies of in vitro pollen germination in flowering plants are very useful for explaining any lack of plant fertility and the importance of reproduction for the continuity of species.

¹Dedicated to the memory of Prof. Dr. Georg Heinrich, University of Graz, our teacher, colleague, and friend.

In the past decades, pollen tubes of various plant species have been used to determine the cytotoxic effects of environmental pollutants (Cox, 1988; Röderer & Reiss, 1988; Xiong & Peng, 2001).

Among various metals, manganese is one of the 17 essential elements for growth and reproduction of biological systems, and an overabundance can be harmful.

An increased dose of manganese in food has various effects on human physiology, resulting in disturbances in the nervous system (Leita et al., 1996). As a component of more than 35 different enzymes, manganese either stimulates or greatly affects various biochemical and physiological functions in plant metabolism (Andresen et al., 2018; Diedrick, 2010). It is also involved in aspects of plant tip growth, such as pollen tube growth and root hair cell elongation (Somerville & Nicol, 2002). On the contrary, manganese is an important industrial metal, the concentration of which is increasing rapidly in our biosphere. As a result, the metal is accumulated in plants in areas with high anthropogenic pressure. Elevated levels of manganese in pollen have been reported in cases of industrial, urban, and rural sites, with concentrations ranging from 21 to 110 ppm (Kamran, 2000).

In previous studies, the influence of a range of various heavy metals on pollen germination and tube growth in *Lilium longiflorum* was studied, and the general mechanism of heavy metal action on pollen tube growth was discussed (Sawidis & Reiss, 1995). Among these metals, manganese has shown a particular influence, and this was the reason for a more detailed study that extended the metal concentration range and modified the type of metal treatment. The main goal of the present study was to determine the effects of manganese on *Lilium* pollen, with a focus on anther morphology, pollen germination, pollen tube growth, and ultrastructural effects at the subcellular level. Such effects are consequential in flower fertilization and fruit set. The aim of the present study was to investigate the effects of low and high doses of manganese on pollen germination and tube growth, which are important for flower fertilization and fruit setting.

2. Material and Methods

2.1. Flower Bud Treatment

A series of standard solutions of MnCl_2 (10^{-12} – 10^{-2} M) was prepared in distilled water. Pedicels of ready-to-open flower buds of *Lilium longiflorum* Thunb, cultivar 'Snow Queen,' were placed in the solutions for 24 hr, simulating the natural uptake of heavy metals. The experiment was repeated three times, and three buds in each replication were tested. The control treatment in each case was the placement of flower buds of the same age in distilled water for the same duration. The flower buds were then placed in a controlled growth chamber (temp. day 24 °C, temp. night 15 °C, light 600 μmol , humidity 65%, CO_2 390 ppm), and the successive weights of the flower buds were taken at 3-hr intervals for 24 hr, starting with the beginning of the experiment. The use of large and well-shaped flowers of *Lilium* offers a good model for studying the dehydration process after metal treatment because they can be easily handled.

After 48 hr, anthers from the manganese-treated flower buds were removed. The length and width of the anthers were measured using a stereoscope and the results recorded. The pollen grains from these anthers were separated using a small brush, after which the grains were sown onto Petri dishes containing a normal aqueous growth medium of 10% (w/v) sucrose and 10 ppm boric acid and allowed to germinate at room temperature for 1 hr. Boron has a regulatory role in pollen germination and tube growth by affecting H^+ -ATPase activity (Wang et al., 2003). It is also instantly involved in pectin synthesis and development of the pollen tube wall (Bhattacharya & Mandal, 2004). The experiment was repeated three times, and approximately, 100 pollen grains per culture were evaluated.

2.2. Pollen Germination in Medium Containing Manganese

In another experiment, pollen grains from freshly opened flowers of the same lily cultivar were left to germinate in the above-described series of growth media, which

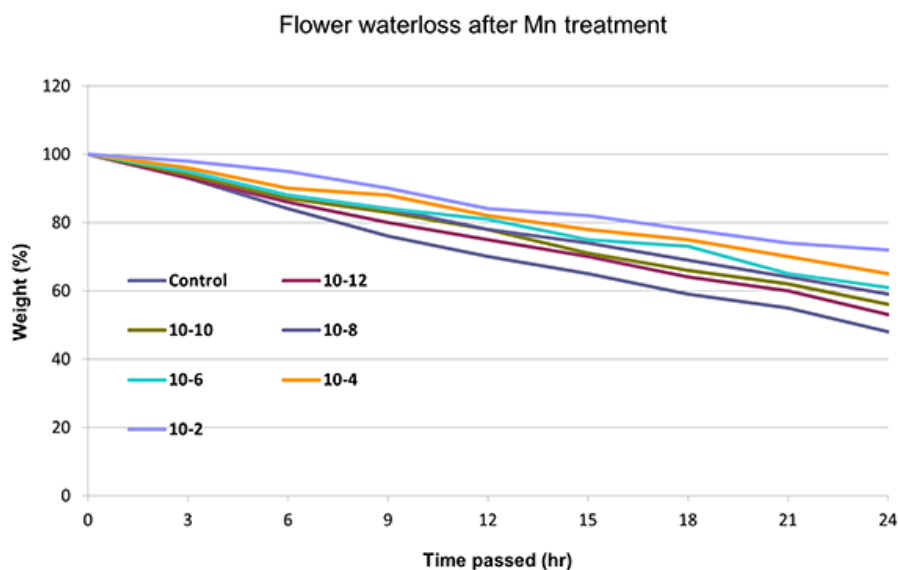


Figure 1 *Lilium longiflorum* flower water loss after manganese treatment.

contained additionally 0 M (control) and 10^{-12} – 10^{-2} M MnCl_2 . Pollen grains were sprinkled on the medium by brushing on each Petri dish. The germination rate was measured using a dissecting microscope 1 hr after the start of cultivation. The experiment was performed in triplicate, and the percentage of pollen germination for each Petri dish was calculated (Ahmad et al., 2012; Gandadikusumah et al., 2017). From each culture, approximately 100 pollen grains were observed and identified as germinated or nongerminated depending on whether a pollen tube could be seen emerging and whether the length of the pollen tube was greater than the diameter of the pollen grain (Rodriguez-Enriquez et al., 2012).

2.3. Microscopical Observations

For ultrastructural study, manganese-treated and control pollen grains were fixed with 2% glutaraldehyde buffered in 0.1 M cacodylate (pH 7.2) and postfixed in 1% osmium tetroxide in the same buffer. After dehydration in an ethanol series, the specimens were finally embedded in Spurr's epoxy resin (Sawidis & Reiss, 1995). Ultrathin sections ($0.08 \mu\text{m}$) were investigated using a Philips EM 400 and a Jeol (JM10) transmission electron microscope (TEM).

3. Results

Water evaporation was significantly reduced in all manganese-treated flower buds in comparison to the control (Figure 1). Water loss was diminished by the progressive increase of the manganese concentration. The highest decrease in water evaporation was observed at 10^{-2} M. After manganese treatment, the water tissue capacity increased, and the dehydration was delayed as the concentration increased. Low concentrations showed lower water loss reduction, similar to the control (Figure 1). The anthers of the treated flower buds became shorter than those in the control, and they did not open fully. The longitudinal axis decreased while the diameter of the anther increased, resulting in its more-or-less oval shape. This was most obvious at high manganese concentrations (10^{-6} and 10^{-4} M), whereas at a concentration of 10^{-2} M, anthers showed incomplete development (Figure 2).

The pollen germination rate of lily flower buds after treatment with manganese ions is shown in Figure 3. The germination ability of pollen grains taken from treated flower buds was reduced to some degree at high concentrations (10^{-8} – 10^{-2} M) in comparison to the control. In contrast, the manganese treatment at low concentrations (10^{-12} – 10^{-10} M) increased the pollen germination rate.

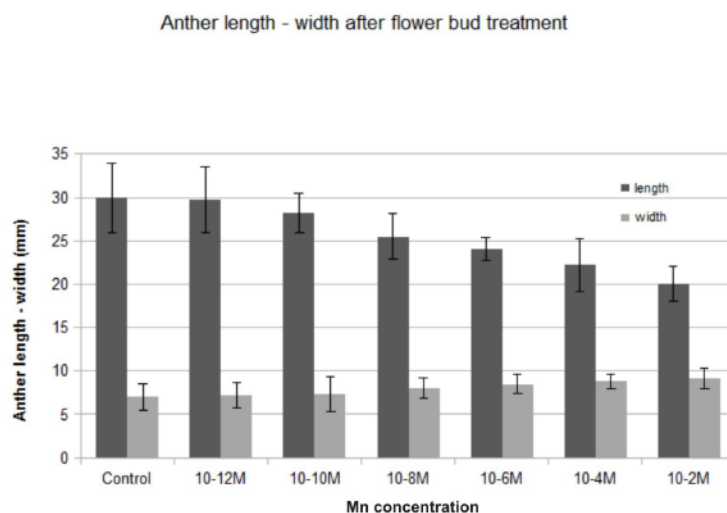


Figure 2 Anther length and width after manganese treatment of a *Lilium longiflorum* flower bud.

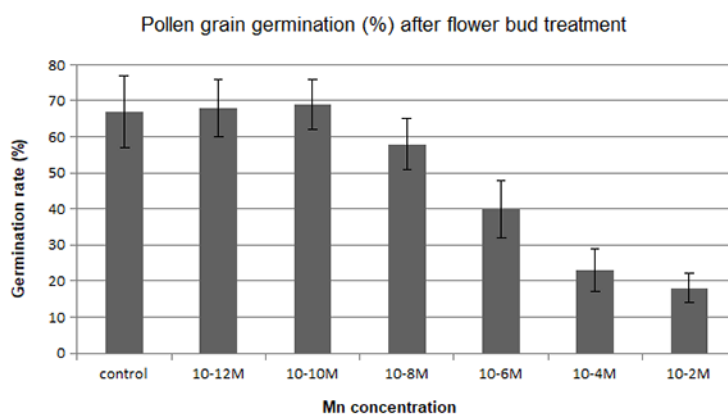


Figure 3 *Lilium longiflorum* pollen germination after manganese treatment with various concentrations for 24 hr.

In another series of experiments, pollen grains were left for 1 hr to germinate in the culture medium containing manganese. Pollen germination was adversely affected in the presence of this metal, and a reduction in the percentage of germinated pollen grains was generally observed in comparison to the control (Figure 4). On the contrary, pollen germination was stimulated by the manganese ions at low concentrations (10^{-12} – 10^{-10} M).

The presence of manganese ions in the culture medium resulted in significant disorders, characterized by an uneven pollen tube growth showing varying morphological responses. Initially, a slight swelling was observed at the tip in most of the examined tubes (Figure 5). A number of mitochondria, plastids, and some small-sized vacuoles were also present near the tip region. The swelling progressed basally, and an irregular increase of tube diameter was observed in close distance to the tip region. However, at the basal region, the tube diameter remained at normal size (Figure 6). The pollen tube growth pattern differed among tubes, revealing a great variability. In the next stages, the formation of cell wall thickening in the tip region prevented further swelling and tube constriction in this area. The swelling continued basally, depending on the thickness and elasticity of the cell wall (Figure 7).

Under normal conditions (control), a large number of Golgi vesicles was visible at the tip (Figure 8). The most significant effect of manganese treatment was the anomalous pollen tube cell wall formation, mainly in the tip region. Abundant,

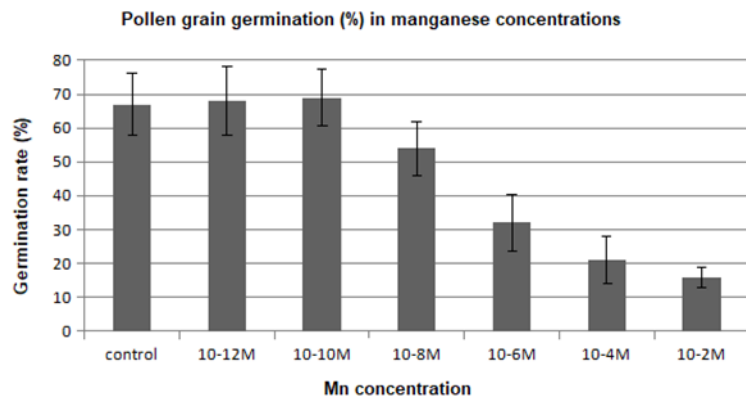


Figure 4 *Lilium longiflorum* pollen germination in various manganese concentrations.

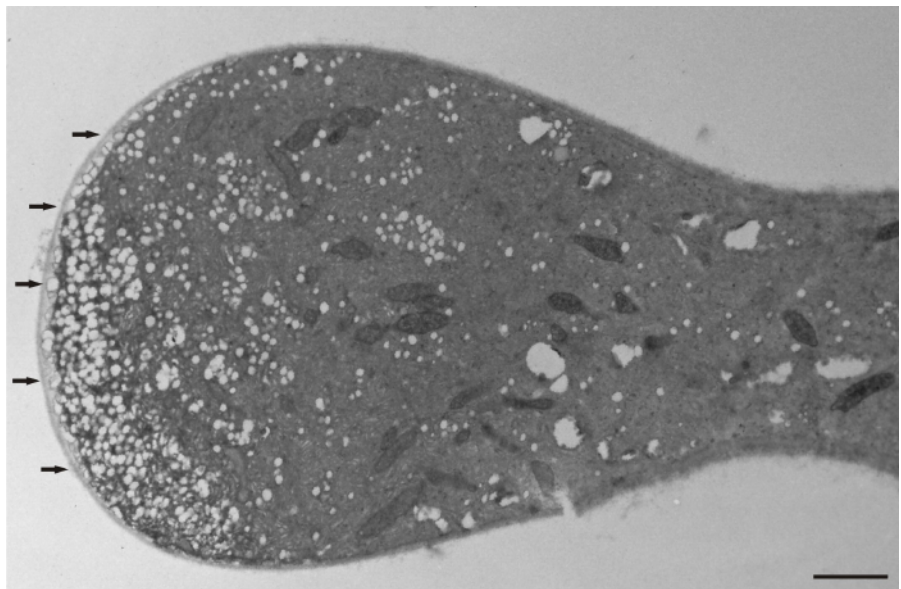


Figure 5 A slightly swelling pollen tube of a *Lilium longiflorum* with thick cell wall at the tip region (arrows). Scale bar = 2 μ m.

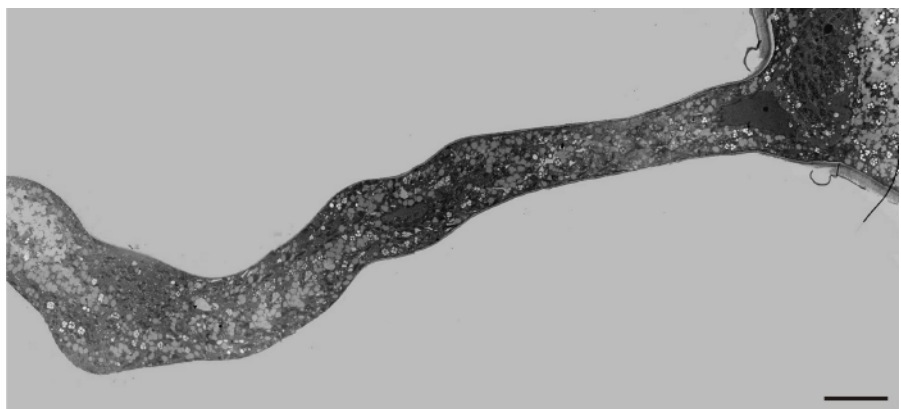


Figure 6 Abnormal increase of a *Lilium longiflorum* pollen tube diameter below the tip area. At the basal area the pollen tube, diameter is normal. Scale bar = 10 μ m.

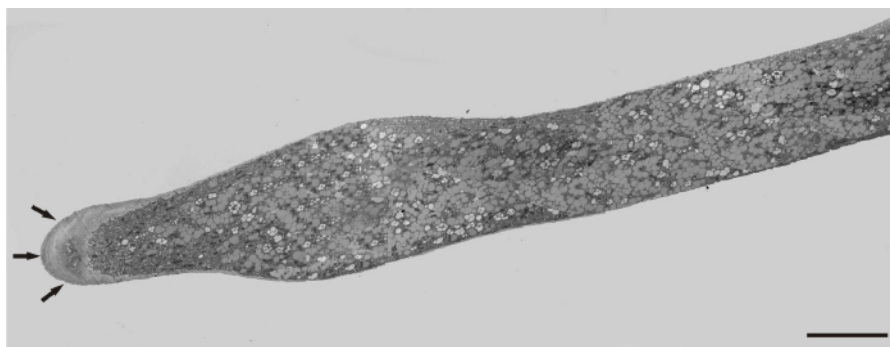


Figure 7 Thick cell wall in a *Lilium longiflorum* tip prevents further tube swelling in this region (arrows). Scale bar = 10 μm .

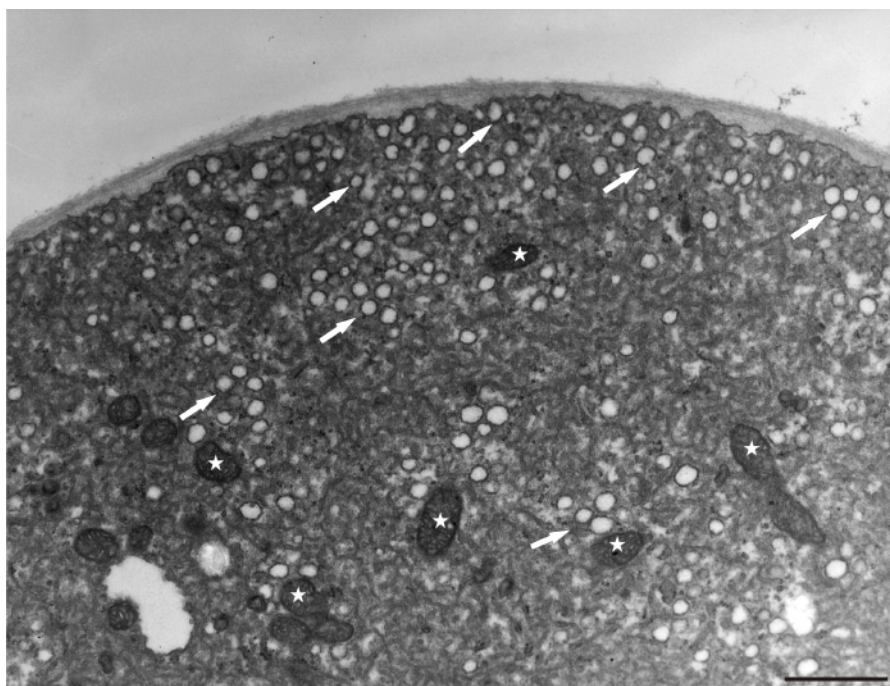


Figure 8 Control pollen tube of *Lilium longiflorum* at the tip area. Numerous Golgi vesicles (arrows) approaching the cell wall and a few mitochondria (asterisks) at a short distance from the tip. Scale bar = 1 μm .

densely compact mitochondria, plastids, and lipid droplets (clearly distinguishable from vacuoles) were found at a short distance from the tip within the apical clear zone. The dictyosomal ultrastructure was not visibly disturbed (Figure 9). An intense presence of vesicles was observed, and the cell wall began to thicken abnormally in the apical region. A prominent effect was the abnormal cell wall organization. Distinct cell wall layers were visible: the outer ones were striated with a fluffy, fibrillar network on the outer surface, whereas the inner layers contained distinct wall globules. On the inner side of the tip region, the apically accumulated vesicles create an additional wall layer directly above the plasma membrane (Figure 10).

After prolonged manganese exposure, globular aggregates were embedded in a fine fibrillar network at the pollen tube tip (Figure 11). These globules were interpreted as Golgi secretion vesicles. Gradually, this accumulated material was loosened, beginning with the outer layers, until its final dispersion in the medium (Figure 12). The protoplast at the tip was compressed, as the functional space was limited by the overgrowth of the cell wall, the thickenings of which consisted of several layers of

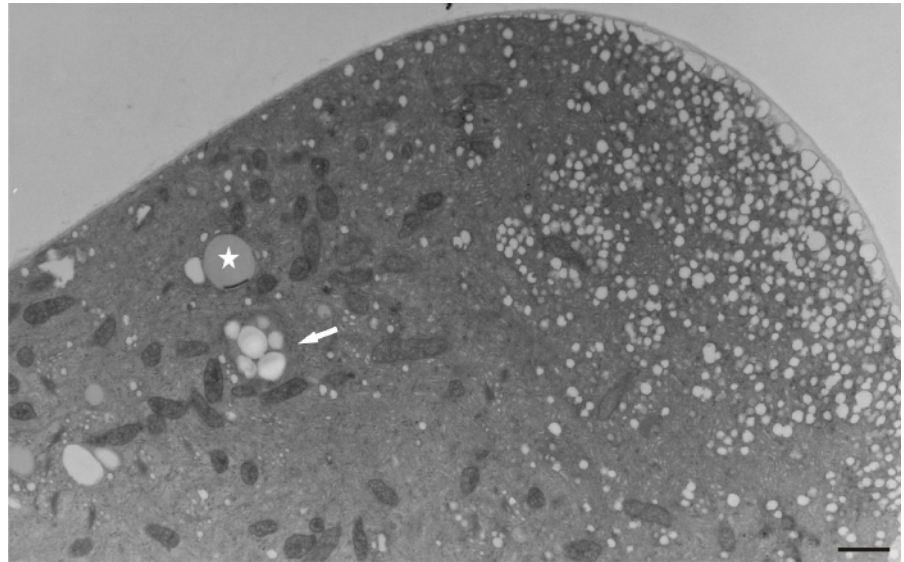


Figure 9 Disruption of organelle organization at the tip area of *Lilium longiflorum* pollen tube. Plastids (arrow) and lipid droplets (asterisk) are present in a short distance from the tip. Scale bar = 1 μm .

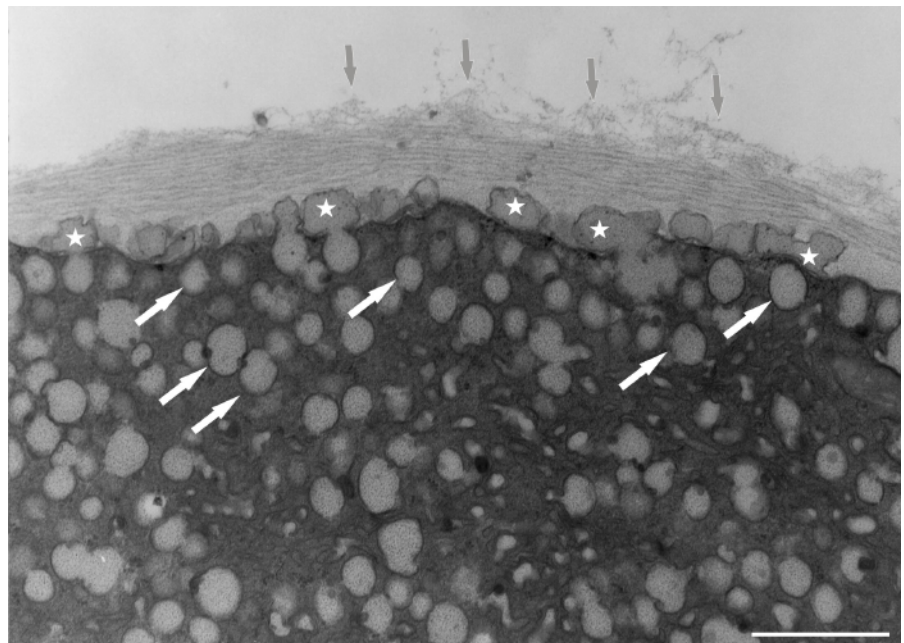


Figure 10 Abundant vesicles (white arrows) at the tip region of *Lilium longiflorum* pollen tube create an additional wall layer (asterisks) directly above the plasma membrane. The outer cell wall layer showed a fluffy appearance, with dispersed fibrillar material (grey arrows). Scale bar = 1 μm .

condensed material (Figure 13). In the pollen tube cell, there were numerous mitochondria and plastids, completely filled with starch (Figure 14). Plastids have been repeatedly observed in close proximity to strongly electron dense mitochondria, whereas rough ER cisternae also appeared near these organelles at the inner cell wall site (Figure 15).

In addition to the abnormal cell wall structures, electron dense globular (EDG) intracellular precipitates could be observed along the plasma membrane. The Golgi vesicles did not appear to fuse with the cell wall. On the contrary, they merged with

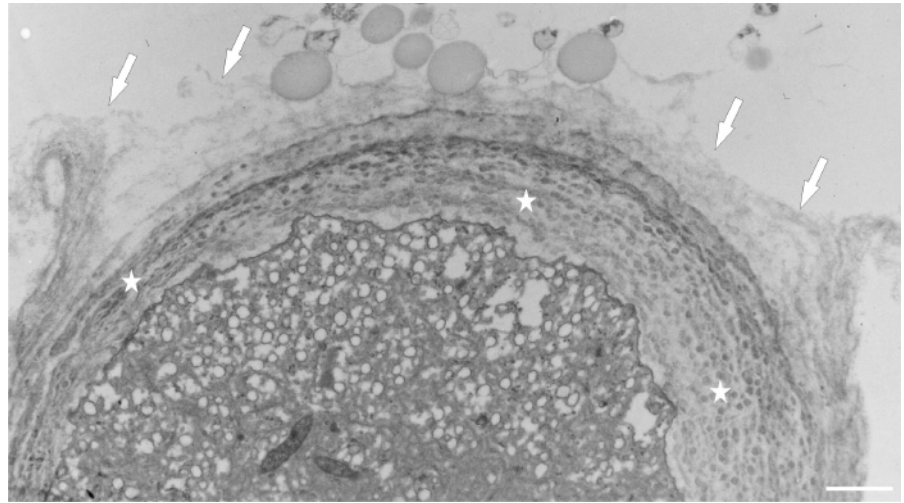


Figure 11 Multiple layered cell wall (asterisks) at the tip of *Lilium longiflorum* pollen tube. From the external layer a fine fibrillar material (arrows) was separated and dissolved in the environment medium. Scale bar = 1 μm .

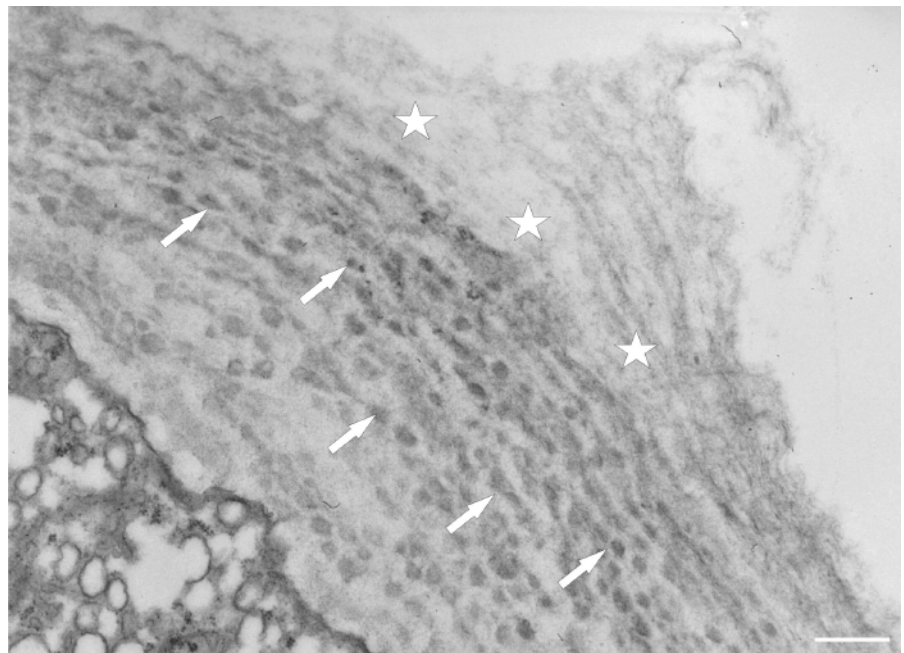


Figure 12 Electron dense clumped wall material of globular aggregates (arrows) immersed in the thick cell wall at the tip of a *Lilium longiflorum* pollen tube. The outer layers of the cell wall (asterisks) are gradually disorganized. Scale bar = 500 nm.

each other, creating inactive aggregates (Figure 16). Vacuoles near the plasma membrane functioned as a primary compartment for a temporal EDG internalization (Figure 17). The marginalization of EDG and vacuoles containing EDG along and in close contact with plasma membrane started from the pollen grain and progressed distally. When EDG approached threateningly the tip region, the vegetative cell reacted with formation of an internal, mechanical barrier to prevent metal permeation in the tip area (Figure 18). For this purpose, mitochondria were mainly recruited, accompanied by other organelles, such as vacuoles and dictyosomes, but not plastids, which remained behind (Figure 19–Figure 21). In many cases, mitochondria supporting the formation of the mechanical barrier were so electron dense that their cristae were obscured (Figure 22).

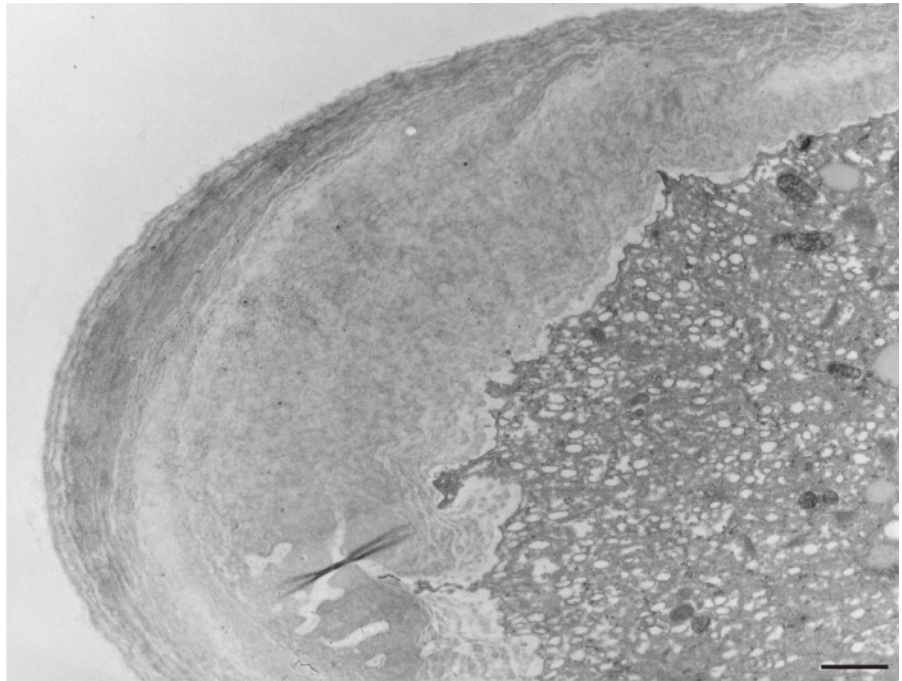


Figure 13 Extremely thick cell wall at the tip of a *Lilium longiflorum* pollen tube, with distinctly visible individual layers. Scale bar = 1 μm .

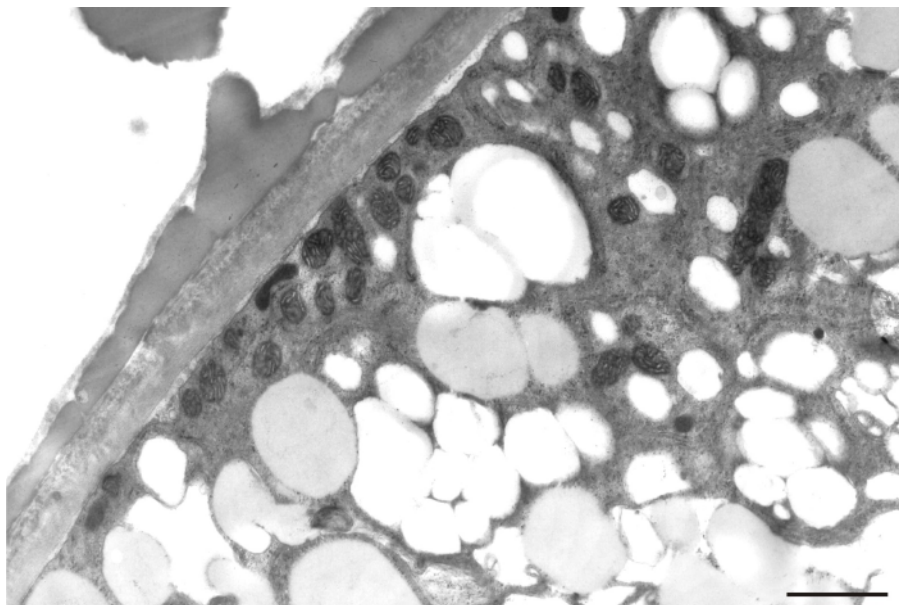


Figure 14 Numerous electron-dense mitochondria and plastids containing starch granules (amyloplasts) in a *Lilium longiflorum* vegetative cell. Scale bar = 1 μm .

4. Discussion

In nature, the rate of evaporation from flower parts (e.g., petals, sepals) depends on radiation level, temperature, humidity, and wind speed. Under experimental conditions, these factors were kept constant. Water evaporation rate was significantly diminished by progressive increase of the manganese concentration. Water capacity is significant in the maturation of pollen, and some trace metals are required for water balance within the anther tissue (Sawidis et al., 2014). After heavy metal uptake, water molecules are strongly adhered to positively charged metallic ions,

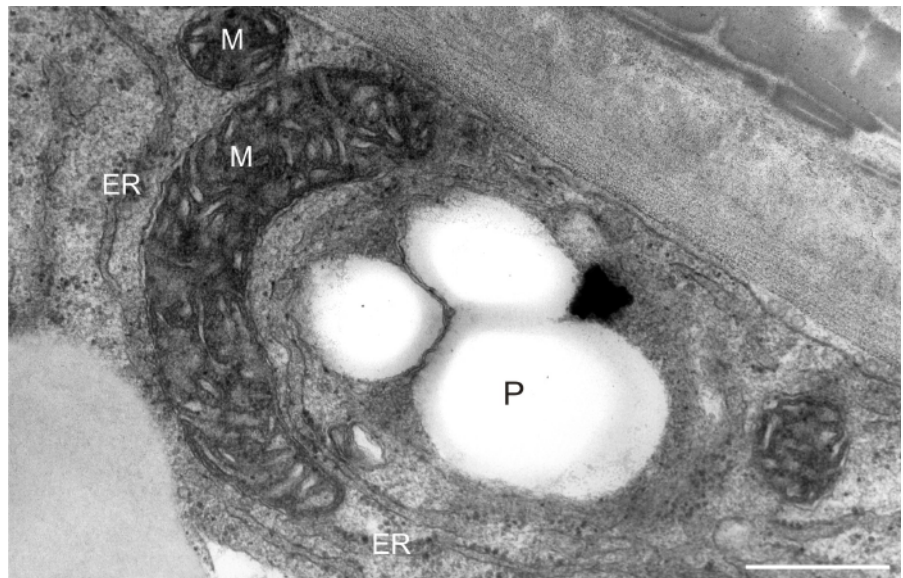


Figure 15 Starch-rich plastid (P) coupled with a mitochondrion (M) near the cell wall of a *Lilium longiflorum* pollen tube. ER cisternae are also present. Scale bar = 500 nm.

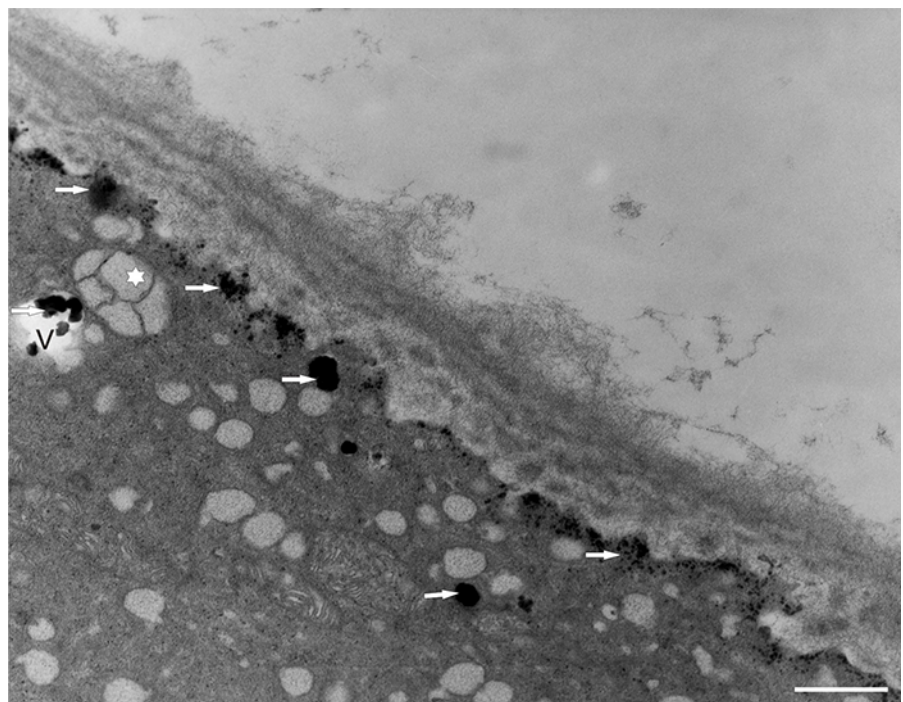


Figure 16 EDG (arrows) along the plasma membrane in a *Lilium longiflorum* pollen tube. A small vacuole (V) contained some of them. Golgi vesicles do not fuse with the plasma membrane but rather agglomerate in an aggregate (asterisk). Scale bar = 500 nm.

causing an overhydration of the tissue and hence the delay of natural evaporation. Moreover, the limited opening of flowers at high metal concentrations also slows the evaporation of water.

The manganese requirement for the development of anthers is significant, and deficiency of this ion decreases pollen production and pollen fertility (Mousavi et al., 2011). Alternatively, excess external manganese results in alterations in anther size and shape, although among flower parts, the anthers showed the lowest metal uptake values (Sawidis, 1997). At the molecular level, excessive manganese can reduce the number of meristematic cell divisions (Zhao et al., 2017). The inhibition of anther

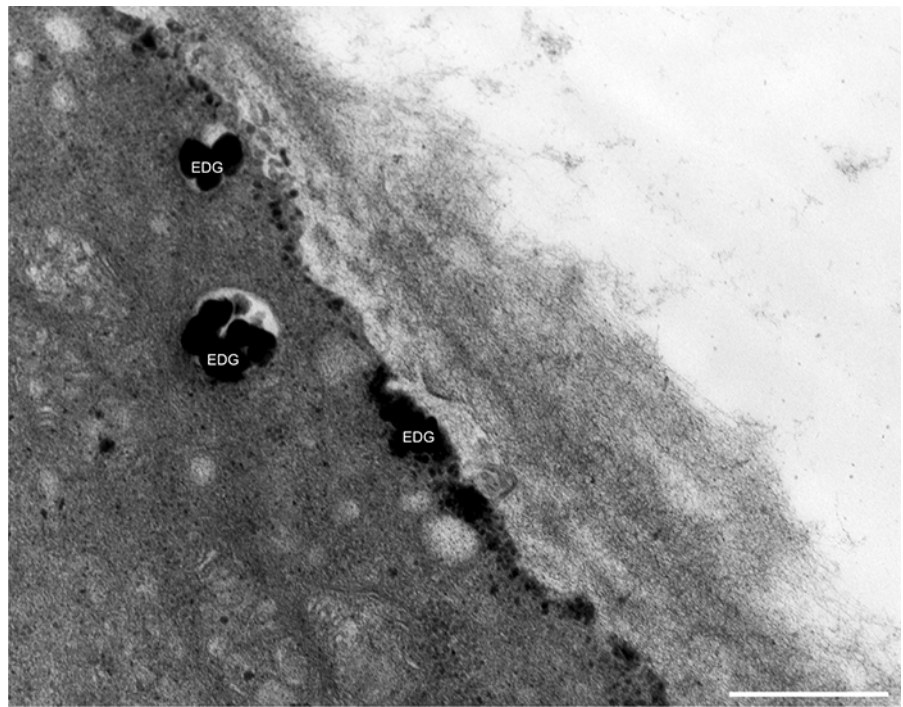


Figure 17 Deposition of excess manganese in the form of EDG along the plasma membrane in a *Lilium longiflorum* pollen tube and their compartmentalization into the vacuoles. Scale bar = 500 nm.

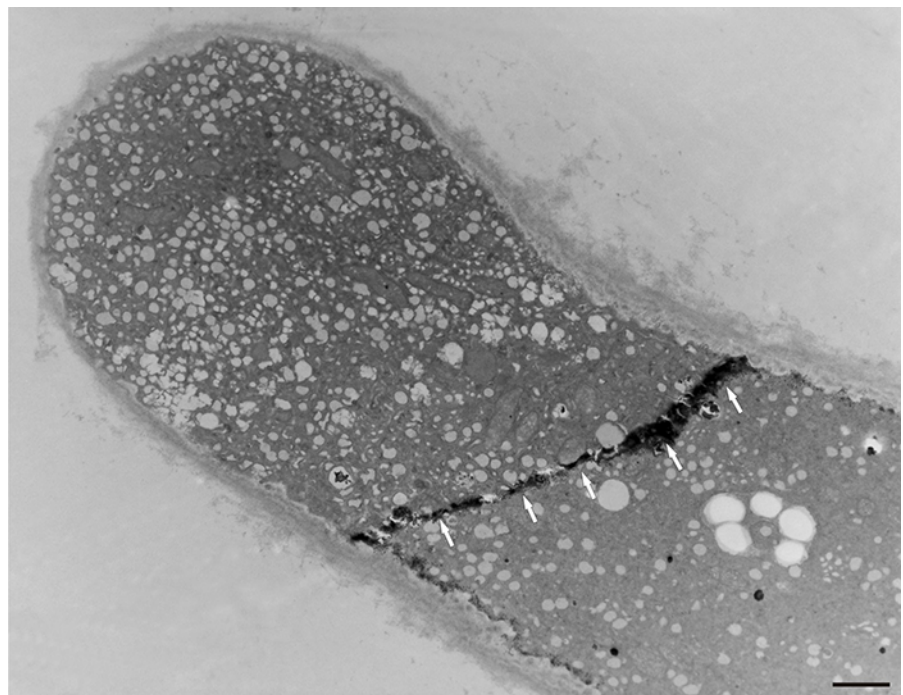


Figure 18 Internal barrier (arrows) separating the tip region from the rest of the vegetative cell in a *Lilium longiflorum* pollen tube. Scale bar = 1 μ m.

development is closely connected to the mitotic activity of the tapetum layer, as demonstrated in meristematic tissues (Fusconi et al., 2007). After manganese treatment, the cell wall becomes more compact, with limited elasticity, preventing the lengthening of the anther. Changes in the size or shape of the anther create additional problems in pollen transport and pollination process.

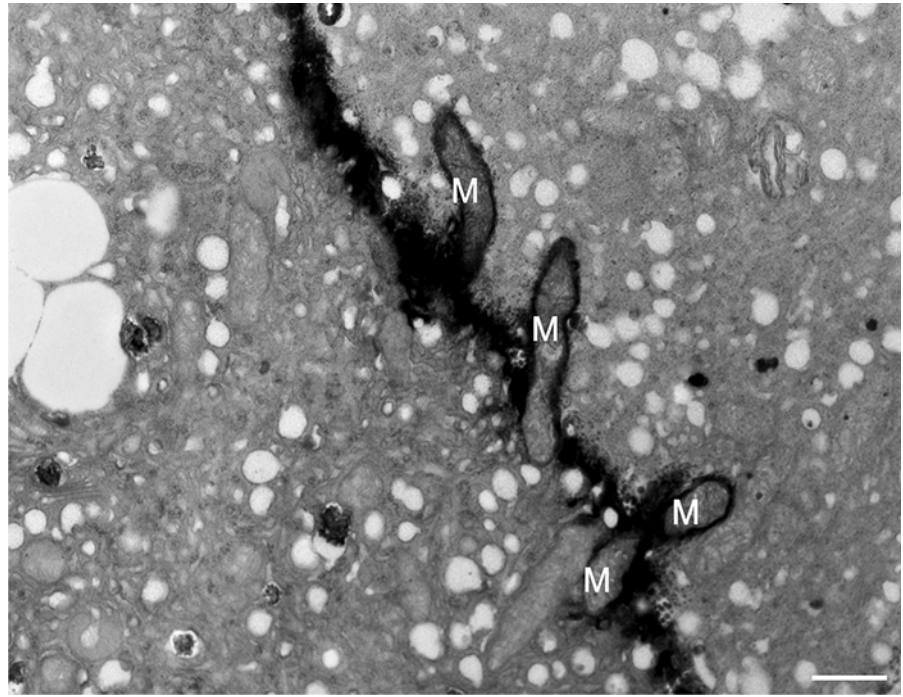


Figure 19 Manganese-treated *Lilium longiflorum* pollen tube: details of the internal barrier made mainly by mitochondria (M). Scale bar = 500 nm.

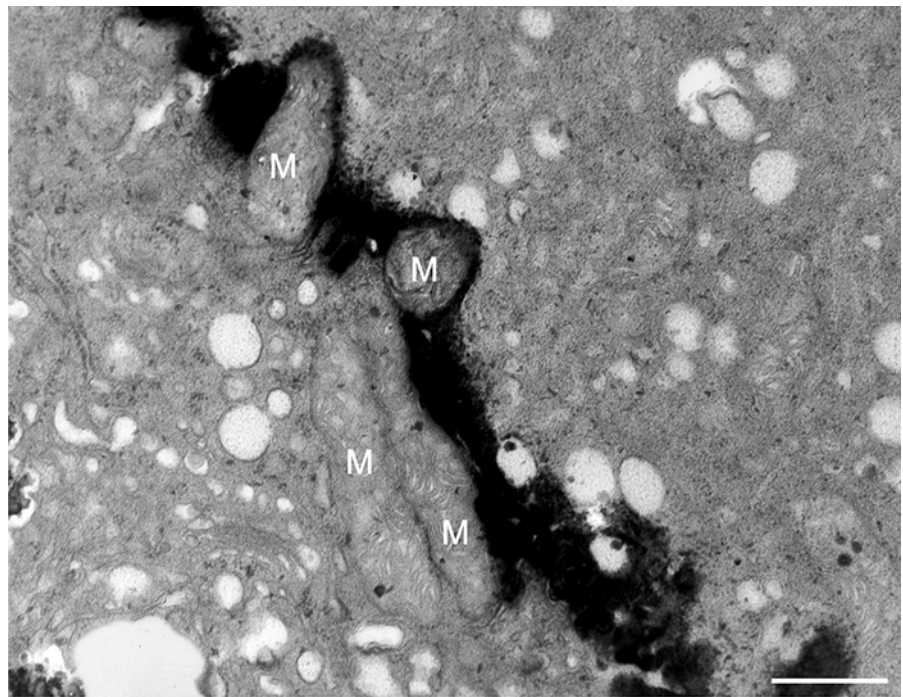


Figure 20 Manganese-treated *Lilium longiflorum* pollen tube: Longitudinal and cross section of barrier mitochondria (M). Scale bar = 500 nm.

Anther development requires a sufficient amount of manganese; its deficiency delays pollen grain production, viability, and fertility (Reuter et al., 1988; C. P. Sharma et al., 1991). As was shown in the present study, the external supply of manganese increased the pollen germination rate at low concentrations (10^{-12} – 10^{-10} M), whereas high concentrations had negative effects. Anthers can provide some protection to the developing pollen grains, especially the

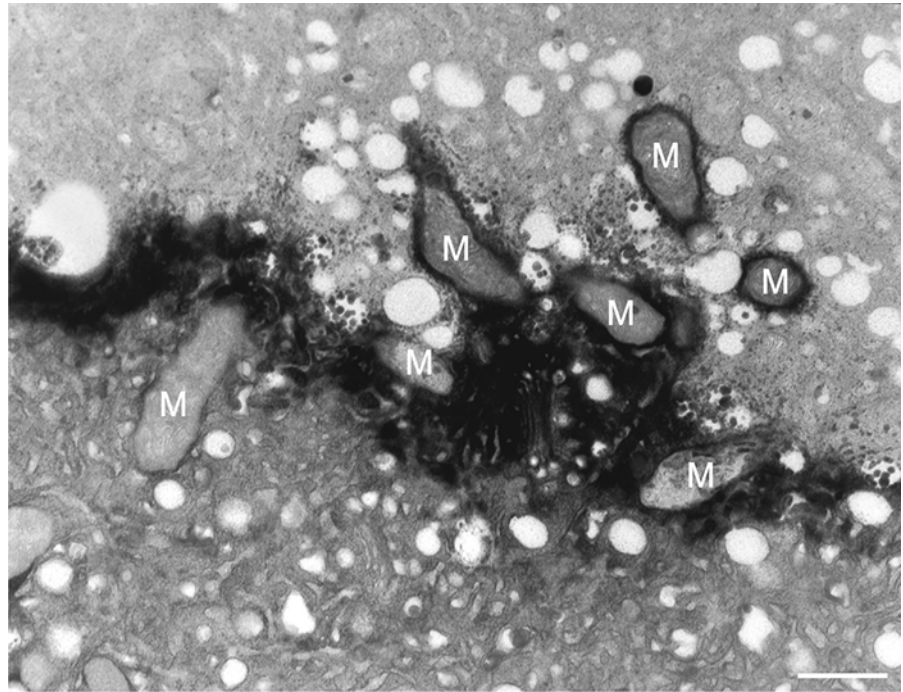


Figure 21 Manganese-treated *Lilium longiflorum* pollen tube: Mitochondria (M) and other organelles as barrier elements surrounded by electron-dense material. Scale bar = 500 nm.

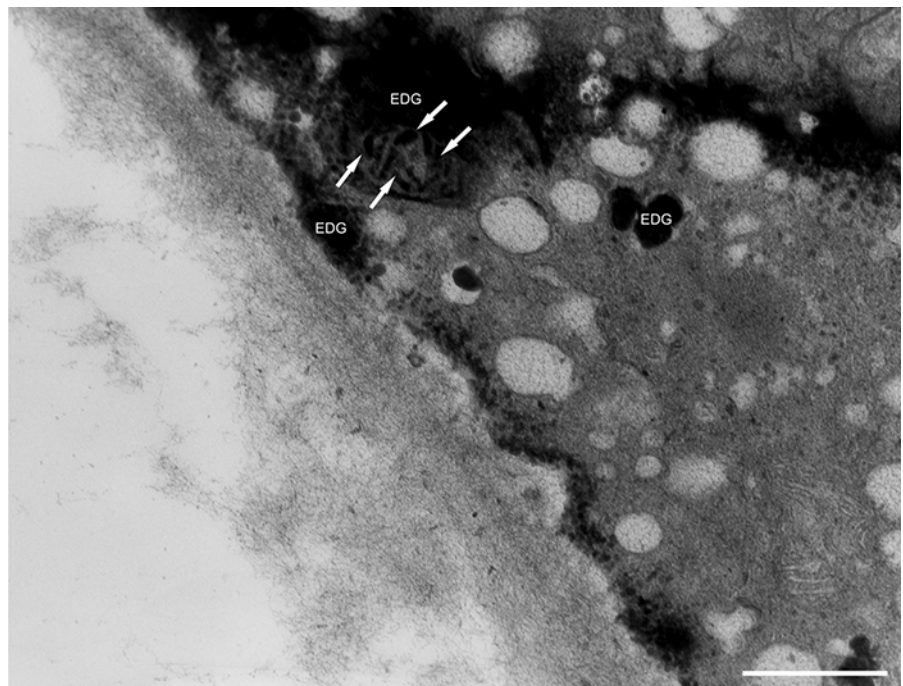


Figure 22 Manganese-treated *Lilium longiflorum* pollen tube: Interface of the cell wall with the artificial barrier. Mitochondria appeared intensely contrasted with widely obscured cristae (arrows). Scale bar = 500 nm.

intermediate tissues, allowing only a small proportion of the applied substance to penetrate them. It is suggested that the increased rate of pollen germination, in the presence of low magnesium concentrations, might be due to higher enzymatic activity and mobilization of stored sugar inside the pollen grain (Bhattacharya, 2017).

Manganese affects pollen germination depending on its concentration. Low metal concentrations can stimulate enzymatic activities, exhibiting an activation of pollen germination. This phenomenon, known as “hormesis,” was defined as a stimulus caused by a low dose of a toxic substance (Sawidis, 2008; Sawidis et al., 2018; Stebbing, 1998; Xiong & Peng, 2001). In the case of manganese, “hormesis” was extended to somewhat high concentrations, whereas negative results were recorded at a concentration of 10^{-6} M. In vitro germination of pollen grains was reduced significantly under lack of manganese (P. N. Sharma, 1992). Thus, it is necessary to determine the optimal concentration of various trace metals for pollen germination (Dafni & Firmage, 2000).

A considerable reduction in pollen germination might affect seed set if infertile pollen grains are transported to the stigma. It is also possible that the pollen from metal-stressed plants might have a short lifespan and reduced tube growth rate (Turner et al., 2004). Excess of manganese reduces cell wall plasticity and extensibility, causing morphological and ultrastructural anomalies in developing pollen tubes. The inactivation of Golgi vesicle material is the main reason for anomalous tube growth, and the negative effects of manganese might be related to the capacity of the cell wall to bind metals, thus inhibiting normal cell wall formation (Sawidis, 2008; Sawidis et al., 2018; Serregin & Kozhevnikova, 2009). The main ultrastructural changes are disorganized intracellular organelle distribution, confirmed by electron microscopical studies (Polevova et al., 2014; Speranza et al., 2007), whereas biochemical or physiological investigations on pollen germination and tube growth in vivo are rather difficult.

The pollen cell wall is composed of several layers as an effective barrier to the entry of toxic substances at high doses (Führs et al., 2010). An additional barrier might be represented by lignin deposition, and the polar growth of the pollen tube requires the continuous delivery of new materials carried by Golgi vesicles to the apex. Excess external manganese causes abnormal callose accumulation at the pollen tube tips, resulting in reduced pollination success (Çetinbaş-Genç et al., 2019). Additionally, depolymerization of the actin cytoskeleton inhibits normal pollen tube growth (Cai et al., 2015).

Our observations of the components of the vegetative cell showed that plastids often became coupled with mitochondria near the cell wall. These organelle arrangements minimize distances for traversing signals from one to the other. Thus, mitochondrial and plastid peptidases are functionally interacting in pollen germination and tube growth, because the signal translocation becomes much easier by direct contact between the two organelles. The production of enzymes involved in cell wall formation by consumption of plastid starch is consistent with the growth and expansion of the cell wall, a critical process for the developing pollen tube. Heavy metal stress might cause inactivation of these enzymes in the chloroplast and mitochondria, resulting in pollen tube deformation.

If a dangerous amount of metal enters the cytoplasm of a vegetative cell, it must react quickly. Precisely, the excess external manganese amount must be isolated to an appropriate location away from the tip region, as the continuous growth of the pollen tube is essential for the delivery of sperm cells to the female gametophyte. For this purpose, vacuoles can serve as a reservoir to regulate cellular manganese homeostasis (Dou et al., 2009; Dučić & Polle, 2007). Vacuoles, which generally function as a primary compartment for metal internalization to avoid toxicity, serve as a temporary storage pool (Lanquar et al., 2010). Metal sequestering in vacuoles or Golgi vesicles is a mechanism of tolerance under excessive conditions (Pittman, 2005).

At the molecular level, excessive manganese can lead to an increase in the accumulation of oxidized manganese and oxidized phenolic compounds (Fecht-Christoffers et al., 2006). These precipitates were found in the form of electron-dense globoids (EDG) along the plasma membrane and in vacuoles (the present study and Bruch et al., 2015; Donner et al., 2012; Mary et al., 2015). In such cases, pollen tubes activate mechanisms to isolate the metal and protect the tube tip. Ultimately, the internal barrier is considered as a part of the response mechanism against penetration of manganese to the tip.

Given the multitude of mitochondrial functions in plant cells, it is not surprising that this mobile organelle acts as a primary structural element of the internal barrier. Moreover, mitochondria are the site of essential biosynthetic pathways, controlling cellular homeostasis in multiple ways (McBride et al., 2006). The manganese transport and efflux strategies are not completely understood, despite the crucial role of manganese in the activity of mitochondrial superoxide dismutase (SOD). Under excess manganese, elevated SOD activity limits cell damages (Alejandro et al., 2020; Corpas et al., 2017), thus protecting pollen tube growth.

5. Conclusion

Manganese toxicity influences pollen germination and tube growth, adversely affecting both processes above a certain low concentration. As a pollutant in industrial, urban, and rural sites, manganese might impact pollen viability and vigor of various plant species. Enhanced manganese levels can affect the quality of the pollen, a precondition for fertilization and fruit setting. Decrease in seed production and loss of biodiversity are critical aspects in the life cycle of all plant organisms. Knowledge regarding the effects of manganese on pollen germination and tube growth will have practical benefits in reproductive biology, especially the prevention of reduced fruit set, which ultimately lowers yield.

References

- Ahmad, S., Rana, A., Sharma, R., & Agnihotri, R. K. (2012). Effect of different media and boric acid on pollen germination and tube of *Tribulus terrestris* – A traditional medicinal plant. *International Journal of Pharmaceutical Sciences Review and Research*, 13(2), 77–79.
- Alejandro, S., Höller, S., Meier, B., & Edgar, E. (2020). Manganese in plants: From acquisition to subcellular allocation. *Frontiers in Plant Science*, 11, Article 300. <https://doi.org/10.3389/fpls.2020.00300>
- Andresen, E., Peiter, E., & Küpper, H. (2018). Trace metal metabolism in plants. *Journal of Experimental Botany*, 69(5), 909–954. <https://doi.org/10.1093/jxb/erx465>
- Bhattacharya, A. (2017). Impact of some heavy metals and pesticides on in vivo pollen germination of *Solanum distichum* Schumach. & Thonn. (Solanaceae) growing in Darjeeling Himalaya. *Trends in Biosciences*, 10(4), 9293–9296.
- Bhattacharya, A., & Mandal, S. (2004). Pollination, pollen germination and stigma receptivity in *Moringa oleifera* Lamk. *Grana*, 43, 48–56. <https://doi.org/10.1080/00173130310016211>
- Bruch, E. M., Thomine, S., Tabares, L. C., & Un, S. (2015). Variations in Mn (II) speciation among organisms: What makes *D. radiodurans* different. *Metallomics*, 7, 136–144. <https://doi.org/10.1039/C4MT00265B>
- Cai, G., Parrotta, L., & Cresti, M. (2015). Organelle trafficking, the cytoskeleton and pollen tube growth. *Journal of Integrative Plant Biology*, 57(1), 63–78. <https://doi.org/10.1111/jipb.12289>
- Corpas, F. J., Barroso, J. B., Palma, J. M., & Rodríguez-Ruiz, M. (2017). Plant peroxisomes: A nitro-oxidative cocktail. *Redox Biology*, 11, 535–542. <https://doi.org/10.1016/j.redox.2016.12.033>
- Cox, R. M. (1988). The sensitivity of pollen from various coniferous and broad-leaved trees to combinations of acidity and trace metals. *New Phytologist*, 109, 193–201. <https://doi.org/10.1111/j.1469-8137.1988.tb03708.x>
- Çetinbaş-Genç, A., Gai, G., Vardar, F., & Ünal, M. (2019). Differential effects of low and high temperature stress on pollen germination and tube length of hazelnut (*Corylus avellana* L.) genotypes. *Scientia Horticulturae*, 255, 61–69. <https://doi.org/10.1016/j.scienta.2019.05.024>
- Dafni, A., & Firmage, D. (2000). Pollen viability and longevity: Practical, ecological and evolutionary implications. *Plant Systematics and Evolution*, 222, 113–132. <https://doi.org/10.1007/BF00984098>
- Diedrick, K. (2010). *Manganese fertility in soybean production*. Pioneer. https://www.pioneer.com/us/agronomy/manganese_deficiency.html
- Donner, E., Punshon, T., Guerinot, M. L., & Lombi, E. (2012). Functional characterisation of metal(loid) processes in planta through the integration of synchrotron techniques and plant molecular biology. *Analytical and Bioanalytical Chemistry*, 402, 3287–3298. <https://doi.org/10.1007/s00216-011-5624-9>

- Dou, C. M., Fu, X. P., Chen, X. C., Shi, J. Y., & Chen, Y. X. (2009). Accumulation and detoxification of manganese in hyperaccumulator *Phytolacca americana*. *Plant Biology*, 11, 664–670. <https://doi.org/10.1111/j.1438-8677.2008.00163.x>
- Dučić, T., & Polle, P. (2007). Manganese toxicity in two varieties of Douglas fir (*Pseudotsuga menziesii* var. *viridis* and *glauca*) seedlings as affected by phosphorus supply. *Functional Plant Biology*, 34(1), 31–40. <https://doi.org/10.1071/FP06157>
- Fecht-Christoffers, M. M., Führes, H., Braun, H. P., & Horst, W. J. (2006). The role of hydrogen peroxide-producing and hydrogen peroxide-consuming peroxidases in the leaf apoplast of cowpea in manganese tolerance. *Plant Physiology*, 140, 1451–1463. <https://doi.org/10.1104/pp.105.070474>
- Fusconi, A., Gallo, C., & Camusso, W. (2007). Effects of cadmium on root apical meristems of *Pisum sativum* L.: Cell viability, cell proliferation and microtubule pattern as suitable markers for assessment of stress pollution. *Mutation Research/Genetic Toxicology and Environmental Mutagenesis*, 632(1–2), 9–19. <https://doi.org/10.1016/j.mrgentox.2007.03.012>
- Führes, H., Behrens, C., Gallien, S., Heintz, D., Dorsselaer, A., Braun, H. P., & Horst, W. J. (2010). Physiological and proteomic characterization of manganese sensitivity and tolerance in rice (*Oryza sativa*) in comparison with barley (*Hordeum vulgare*). *Annals of Botany*, 105, 1129–1140. <https://doi.org/10.1093/aob/mcq046>
- Gandadikusumah, V. G., Wawangningrum, H., & Rahayu, S. (2017). Pollen viability of *Aeschynanthus tricolor* Hook. *Journal of Tropical Life Science*, 7(1), 53–60. <https://doi.org/10.11594/jtls.07.01.09>
- Gur, N., & Topdemir, A. (2005). Effects of heavy metals (Cd, Cu, Pb, Hg) on pollen germination and tube growth of quince (*Cydonia oblonga* M.) and plum (*Prunus domestica* L.). *Fresenius Environmental Bulletin*, 14, 36–39.
- Kamran, F. (2000). Honey, pollen and bees as indicator of metal pollution. *Acta Universitatis Carolinae, Environmentalica*, 14, 13–20.
- Lanquar, V., Schnell Ramos, M., Lelièvre, F., Barbier-Brygoo, H., Krieger-Liszkay, A., Krämer, U., & Thomine, S. (2010). Export of vacuolar manganese by AtNRAMP3 and AtNRAMP4 is required for optimal photosynthesis and growth under manganese deficiency. *Plant Physiology*, 152, 1986–1999. <https://doi.org/10.1104/pp.109.150946>
- Leita, L., Muhlbachova, G., Cesco, S., Barbattini, R., & Mondini, C. (1996). Investigation of the use of honey-bees and honey bee products to assess heavy metals contamination. *Environmental Monitoring and Assessment*, 43, 1–9. <https://doi.org/10.1007/BF00399566>
- Mary, V., Schnell Ramos, M., Gillet, C., Socha, A. L., Giraudat, J., Agorio, A., Merlot, S., Clairet, C., Kim, S. A., Punshon, T., Guerinot, M. L., & Thomine, S. (2015). Bypassing iron storage in endodermal vacuoles rescues the iron mobilization defect in the *natural resistance associated-macrophage protein3 natural resistance associated-macrophage protein4* double mutant. *Plant Physiology*, 169, 748–759. <https://doi.org/10.1104/pp.15.00380>
- McBride, H. M., Neuspiel, M., & Wasiak, S. (2006). Mitochondria: More than just a powerhouse. *Current Biology*, 16, 551–560. <https://doi.org/10.1016/j.cub.2006.06.054>
- Mousavi, S. R., Rezaei, M. A., & Shahsavari, M. (2011). General overview on manganese (Mn) importance for crops production. *Australian Journal of Basic and Applied Sciences*, 5(9), 1799–1803.
- Pittman, J. K. (2005). Managing the manganese: Molecular mechanisms of manganese transport and homeostasis. *New Phytologist*, 167, 733–742. <https://doi.org/10.1111/j.1469-8137.2005.01453.x>
- Polevova, S., Breygina, M., Matveyeva, N., & Yermakov, I. (2014). Periplasmic multilamellar membranous structures in *Nicotiana tabacum* L. pollen grains treated with Ni²⁺ or Cu²⁺. *Protoplasma*, 251, 1521–1525. <https://doi.org/10.1007/s00709-014-0651-y>
- Reuter, D. J., Alston, A. M., & McFarlane, J. D. (1988). Occurrence and correction of manganese deficiency in plants. In R. D. Graham, J. Hannam, & N. C. Uren (Eds.), *Manganese in soils and plants* (pp. 205–224). Kluwer Academic Publishers. https://doi.org/10.1007/978-94-009-2817-6_15
- Rodriguez-Enriquez, M. J., Mehdi, S., Dickinson, H. G., & Grant-Downtown, R. T. (2012). A novel method for efficient in vitro germination and tube growth of *Arabidopsis thaliana* pollen. *New Phytologist*, 197, 668–679. <https://doi.org/10.1111/nph.12037>
- Röderer, G., & Reiss, H.-D. (1988). Different effects of inorganic and triethyl lead on growth and ultrastructure of lily pollen tubes. *Protoplasma*, 144, 101–109. <https://doi.org/10.1007/BF01637242>
- Sawidis, T. (1997). Accumulation and effects of heavy metals in *Lilium* pollen. *Acta Horticulturae*, 437, 153–158. <https://doi.org/10.17660/ActaHortic.1997.437.14>

- Sawidis, T. (2008). Effect of cadmium on pollen germination and tube growth in *Lilium longiflorum* and *Nicotiana tabacum*. *Protoplasma*, 233, 95–106. <https://doi.org/10.1007/s00709-008-0306-y>
- Sawidis, T., Baycu, G., Cevahir-Öz, G., & Weryszko-Chmielewska, E. (2018). Effect of mercury on pollen germination and tube growth in *Lilium longiflorum*. *Protoplasma*, 255, 819–828. <https://doi.org/10.1007/s00709-017-1192-y>
- Sawidis, T., Papadopoulou, A., & Voulgaropoulou, M. (2014). Effect of zinc on nectar secretion of *Hibiscus rosa-sinensis* L. *Protoplasma*, 251, 575–589. <https://doi.org/10.1007/s00709-013-0557-0>
- Sawidis, T., & Reiss, H.-D. (1995). Effects of heavy metals on pollen tube growth and ultrastructure. *Protoplasma*, 185, 113–122. <https://doi.org/10.1007/BF01272851>
- Serregin, I., & Kozhevnikova, D. (2009). Transport and distribution of nickel in higher plants. In A. Barket, S. Hayat, & A. Ahmad (Eds.), *Nickel in relation to plants* (pp. 11–32). Narosa Publishing House.
- Sharma, C. P., Sharma, P. N., Chatterjee, C., & Agarwala, S. C. (1991). Manganese deficiency in maize affects pollen viability. *Plant and Soil*, 138, 139–142. <https://doi.org/10.1007/BF00011816>
- Sharma, P. N. (1992). Pollen fertility in manganese-deficient wheat. *Tropical Agriculture*, 69, 21–24.
- Somerville, D. C., & Nicol, H. I. (2002). Mineral content of honeybee-collected pollen from southern New South Wales. *Australian Journal of Experimental Agriculture*, 42(8), 1131–1136. <https://doi.org/10.1071/ea01086>
- Speranza, A., Ferri, P., Battistelli, M., Falcieri, E., Crinelli, R., & Scoccianti, V. (2007). Both trivalent and hexavalent chromium strongly alter in vitro germination and ultrastructure of kiwifruit pollen. *Chemosphere*, 66, 1165–1174. <https://doi.org/10.1016/j.chemosphere.2006.08.019>
- Stebbing, A. R. D. (1998). A theory for growth hormesis. *Mutation Research/Fundamental and Molecular Mechanisms of Mutagenesis*, 403(1–2), 249–258. [https://doi.org/10.1016/S0027-5107\(98\)00014-1](https://doi.org/10.1016/S0027-5107(98)00014-1)
- Turner, N. C., Abbo, S., Berger, J. D., Chaturvedi, S. K., French, R. J., Ludwig, C., Mannur, D. M., Unyayar, S. J., Keles, S. Y., & Unal, E. (2004). Proline and ABA levels in two sunflower genotypes subjected to tolerance in water stress. *Bulgarian Journal of Plant Physiology*, 30(3–4), 34–47.
- Wang, Q., Lu, L., Wu, X., Li, Y., & Lin, J. (2003). Boron influences pollen germination and pollen tube growth in *Picea meyeri*. *Tree Physiology*, 23(5), 345–351. <https://doi.org/10.1093/treephys/23.5.345>
- Xiong, Z.-T., & Peng, Y.-H. (2001). Response of pollen germination and tube growth to cadmium with special reference to low concentration exposure. *Ecotoxicology and Environmental Safety*, 48(1), 51–52. <https://doi.org/10.1006/eesa.2000.2002>
- Zhao, J., Wang, W., Zhou, H., Wang, R., Zhang, P., & Wang, H. (2017). Manganese toxicity inhibited root growth by disrupting auxin biosynthesis and transport in *Arabidopsis*. *Frontiers in Plant Science*, 8, Article 272. <https://doi.org/10.3389/fpls.2017.00272>