

Article ID: 177130
DOI: 10.5586/am/177130

Publication History
Received: 2023-08-12
Accepted: 2023-12-16
Published: 2023-12-31

Handling Editor
Piotr Zaniewski; Warsaw
University of Life Sciences,
Warsaw, Poland;
<https://orcid.org/0000-0002-0792-9854>

Authors' Contributions
PC: Research concept and design; PC, MT, RS, AP: Collection and/or assembly of data; PC, MT, RS, AP: Data analysis and interpretation; PC, MT: Writing the article; PC, RS: Critical revision of the article; PC: Final approval of the article



Funding
This research was mainly financed from the private and partially from the statutory funds of the Rzeszów University and the Gorce National Park (PC & MT).

Competing Interests
No competing interests have been declared.

Copyright Notice
© The Author(s) 2023. This is an open access article distributed under the terms of the [Creative Commons Attribution License](https://creativecommons.org/licenses/by/4.0/), which permits redistribution, commercial and noncommercial, provided that the article is properly cited.

ORIGINAL RESEARCH PAPER

Lobaria pulmonaria as an umbrella species for the protection of epiphytic lichen diversity in Polish Carpathians

Paweł Czarnota ^{1,2*}, Michał Tuchowski ³, Rafał Szymczyk ⁴, Amelia Piegoń⁵

¹Department of Ecology and Environmental Protection, Institute of Agricultural Sciences, Land Management and Environmental Protection, University of Rzeszów, Zelwerowicza 4, 35-601 Rzeszów, Poland

²Scientific Laboratory of the Gorce National Park, Gorce National Park, Poręba Wielka 590, 34-735 Niedźwiedz, Poland

³Institute of Biology, University of Rzeszów, Zelwerowicza 4, 35-601 Rzeszów, Poland

⁴EKOPROJEKT, Environmental Survey Laboratory, Nowica 24, 14-405 Nowica, Poland

⁵Department in Przemyśl, Bureau for Forest Management and Geodesy, Wysockiego 46a, 37-700 Przemyśl, Poland

* To whom correspondence should be addressed. Email: pczarnota1@gmail.com

Abstract

Lobaria pulmonaria has been subject to strict and zonal protection in Poland for almost 20 years, assuming the function of an umbrella species for the protection of natural biodiversity. Knowledge about this function, however, is limited, mainly due to a lack of relevant research. The current protection zone with a radius (R) of up to 50 m was significantly reduced in 2014 compared to the previous one from 2004 ($R = 100$ m), mainly due to the needs of forest management. This legislative change became why it was worth making a scientific balance of potential gains and losses. Corticolous lichens growing at circular sites with a radius of 150 m around lungwort host-trees, divided into three zones $R = 50$ m, $R = 51-100$ m, $R = 101-150$ m, were selected as the biological group for verification. Beech (*Fagus sylvatica*) and sycamore (*Acer pseudoplatanus*) trees with DBH ≥ 40 cm, randomly located along the target azimuths of 0°, 120°, and 240°, were selected for the study at 15 sites located in the Polish Carpathians (Gorce and Bieszczady Mts). The research hypothesis was that the size of the *L. pulmonaria* protection zone in the Polish Carpathians is important for the conservation of a greater diversity of corticolous lichens. Based on the list of species, we assessed the statistical significance of differences in diversity indices between the zones and between the Gorce and Bieszczady sites, which was justified by the result of the DCA analysis. Both the total number of species and old-growth forest, legally protected and endangered species in Poland (categories EN, CR) were analyzed. Generally, the current protection zone with a radius of 50 m protects approx. 70% of all epiphytic lichen diversity and the same share of other investigated groups, while increasing the protection zone to $R = 100$ m saves almost 90% of species representing these groups of lichens.

Keywords

Lobaria pulmonaria; nature protection; umbrella species; zonal conservation; lichen diversity; diversity index

1. Introduction

Lobaria pulmonaria is widely recognized as a key lichen species characterizing old-growth forests (Brodo et al., 2001; Jürriado & Liira, 2010; Kondratyuk et al., 1998; Motiejūnaitė et al., 2004; Nadyeina et al., 2014). Given the research by

Goward (1994), Werth (2001), and Werth et al. (2007) it can be assumed that as in the other species with an extensive geographical range (Brodo et al., 2001; Widmer et al., 2012) its habitat specialization is increasing as well as its bioindicative role as a stenotopic species in the gradient of progressive climate continentalism (Nadyeina et al., 2014). The history

of the forest ecosystem, its fragmentation, and even the way it is used affects the genetic variability of the *L. pulmonaria* population, the continuity of propagation, the success of dispersion, the vitality and may determine the survival of this species (Bianchi et al., 2020; Brunialti et al., 2015b; Öckinger et al., 2005; Scheidegger & Werth, 2009; Zoller et al., 1999). The key habitat factors for its occurrence seem to be: stable, high air humidity, and diffused sunlight, which prevent long periods of thallus drying (Gauslaa & Solhaug, 1999; Khanov & Pshegusov, 2021). Despite many threats resulting from direct or indirect anthropopressure, the European population of *L. pulmonaria* is still relatively numerous and genetically diverse (Widmer et al., 2012), although there are many examples of reduction and disappearance of its regional or local ranges (Fałtynowicz, 2003; Farkas & Lőkös, 1998; Jürriado & Liira, 2010; Nascimbene et al., 2016). *L. pulmonaria* shares specific microclimatic requirements with other rare lichen species sensitive to forest disturbances what predispose this easily recognizable macrolichen to the role of an umbrella species (Bianchi et al., 2020; Nascimbene et al., 2010; Nilsson et al., 1995; Scheidegger & Werth, 2009). Umbrella species are considered to be species with high requirements, which, while providing a sufficient protected area, contribute to the protection of co-occurring species and help identify species-rich areas on a large geographical scale (Caro, 2003). The presence of larger and more viable populations of *L. pulmonaria* corresponds with more lichen species richness in general, more macrolichen diversity, and more abundance of rare lichen species and cyanolichens, as well as a species composition (Campbell & Fredeen, 2004; Nascimbene et al., 2010). The decrease in the area of key habitats for *L. pulmonaria* and the subsequent downward trend in the number of the species prompted the governments of several countries to place it under legal protection and grant it the status of special concern (e.g., Khanov & Pshegusov, 2021; Scheidegger & Clerc, 2002). The legal protection of *L. pulmonaria* was applied among others in Hungary, Germany, Estonia, Ukraine, and Croatia. In France, Russia, and the United Kingdom it is only under regional protection (Paoli et al., 2019). This approach has also been used in Poland for almost 20 years, where, in addition to the classic species protection that prohibits the destruction of thalli and habitats, this species is also subject to zone protection (RME, 2014a; Ryś, 2007). Despite the official determination of the maximum size of the protection zone, its optimal size for the preservation of *L. pulmonaria* sites, as well as for 10 other stenotopic forest lichen species, is a debatable and unexplored issue in Poland. Changing the size of this protection zone from an area limited by a radius of 100 m (RME, 2004) to a zone with a radius of up to 50 m (RME, 2014a) raises the question of its legitimacy, especially in the context of the umbrella role of *L. pulmonaria* for the preservation of stable habitats and the resulting diversity of co-occurring species. It is no secret that usually strictly protected zones created under EU law for various protected objects, constitute a significant limitation of economic functions in forests (Ryś, 2007). They become particularly controversial for the land managers in those fragments of forests that have still retained their natural character, manifested by the abundance of endangered and protected species, and require many hectares of zone protection. The conflict between nature protection and the economy has a centuries-long tradition, but the basis for administrative decisions taken to protect natural

resources should be scientifically justified, especially since it is the awareness of officials that determines the establishment and size of a protection zone. We were looking forward to such justification when undertaking research in the Polish Carpathians on the relationship between the size of protection zones for *L. pulmonaria* and the diversity of lichen species in the context of the discussion on the proposed changes to the law on the protection of the lichen species (Fałtynowicz, 2021a, 2021b, 2021c).

The aim of the study was to obtain scientific data that would enable the assessment of the validity of changes in the legal protection of *Lobaria pulmonaria* in the context of the corticolous lichen diversity conservation, including stenotopic, endangered and legally protected species. We hypothesized that the size of the *L. pulmonaria* protection zone is important for the conservation of a greater diversity of corticolous lichens in the Polish Carpathians.

2. Material and methods

2.1. Study area as a background for the occurrence of *Lobaria pulmonaria*

Field lichenological research was carried out in the years 2015–2020 in the area of Gorce National Park, the wildest part of the Gorce Mts in the Polish Western Carpathians and the Stuposiany Forest District in the Bieszczady Zachodnie Mts, a part of the Polish Eastern Carpathians (Figure 1). The choice of research areas was based on the contemporary occurrence of *L. pulmonaria* in the Polish part of the Carpathians (Czarnota, 2000; Kościelniak, 2013; Ryś, 2007; Tuchowski, 2022; Wąsik, 2016) and the maximum elimination of anthropogenic factors that could affect the composition of the lichen biota in the extensive zones around *L. pulmonaria* sites, which were legally protected areas, or in the state forests were not subject to intensive economic use in the last few decades. In view of such assumptions, the natural dynamics of forest stands resulting from the natural mortality of trees seemed to be the almost sole reason for the formation of the contemporary biota of lichens accompanying *L. pulmonaria* in these areas.

Gorce National Park, erected in 1981, covers a large area of natural and somewhere even primeval mixed lower-belt forests mostly represented by various forms of the Carpathian beech forest *Dentario glandulosae-Fagetum*. In the best-preserved parts of such forests, but also in parts used for logging, *L. pulmonaria* has been found throughout the last century (Czarnota, 2000; Czarnota et al., 2005; Glanc, 1960; Motyka, 1930). The most numerous sites of this species (18), found as a result of intensive research on the Gorce lichen biota, were recorded at the turn of the 1950s and 1960s (Czarnota et al., 2005; Glanc, 1960). About half of them survived until the end of the century, and a few new ones were found in the past decade (Tuchowski, 2022; Wąsik, 2016). Certainly, most of the sites were lost for natural reasons as a result of the death of host trees (Czarnota, pers. inform.). In 2022, *L. pulmonaria* was recorded in the Gorce Mts at 10 sites, inhabiting ancient, sometimes heavily decayed beeches with a diameter of 57–97 cm DBH with small thalli dominating in this population and yet showing signs of degeneration (Tuchowski, 2022). There was no legal zonal

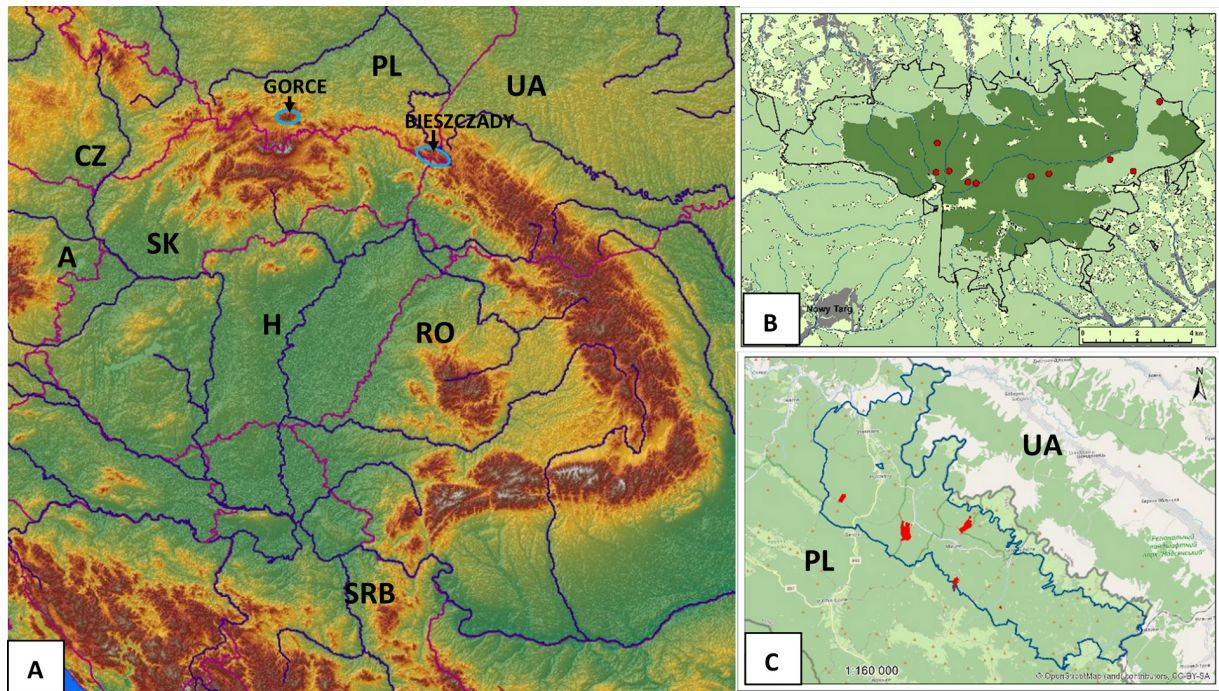


Figure 1 Localities of field lichenological research on the background of the Carpathians (A) and the maps of Gorce National Park (B) and Stuposiany Forest District (C). The meaning of the colours used in Figure 1B and Figure 1C: light green - wooded area, dark green - strictly protected area, red - sites of the researched protected zones of *Lobaria pulmonaria*.

protection around these sites due to their strict protection in the national park.

The Western Bieszczady Mts is a vast complex of medium-high mountains on the border of Poland, Ukraine, and Slovakia (1150 km²; Solon et al., 2018), with the remains of beech and sycamore forests that have retained their ancient character. It was evidenced already in the 1950s by numerous records of many species of stenotopic macrolichens, representing genera such as *Cetrelia*, *Leptogium*, *Lobaria*, *Nephroma*, *Parmotrema*, *Usnea* (Glanc & Tobolewski, 1960). The most valuable natural parts of these forests have been protected within the borders of the Bieszczady National Park established in 1973, but equally valuable areas of old deciduous forests *Dentario glandulosae-Fagetum* are located among others in the managed state forests of the Stuposiany Forest District, in the belt bordering the national park. As the last observations of the authors have shown, data from the Regional Directorate for Environmental Protection in Rzeszów, the government body responsible for nature conservation in this region of Poland, and previous inventories of *L. pulmonaria* sites (Ryś, 2007), locally in this area this species still occurred frequently and numerously. Its thalli often exceed 50 cm in diameter and sometimes develop fruiting bodies (Kościelniak & Betleja, 2015). The protection zones designated there in the last few years now cover a total area of several dozen hectares, with some of them grouping up to several dozen old beeches and sycamores of more than 100 cm DBH inhabited by *L. pulmonaria*. From the multitude of sites, five were selected for our study (Figure 1C).

2.2. Characteristics of studied sites

All studied sites in the Bieszczady Mts and Gorce Mts were located in the area covered with the Carpathian beech forest *Dentario glandulosae-Fagetum*, differing, however, in both ranges, since in Bieszczady Mts sycamore besides beech often plays the role of the main forest-forming species while in Gorce Mts, the higher altitude, the share of Norway spruce is much larger. All sites were chosen in old-growth forests (Table 1) with more or less numerous trees of younger generations. Individual sites differ in the spatial and age structure of the stands, shaped in recent decades mainly by the natural processes of dieback and recruitment.

Most sites of *L. pulmonaria* were located on the cooler, northern, and eastern exposures of slopes, if in the lower parts of the mountains, then usually in the depressions of the river valleys, stabilizing humid microclimate. In the Gorce Mts, the sites were located on ridges and slopes, but higher than in Bieszczady Mts, in the zone of more abundant and frequent precipitation, including snow.

2.3. Methods

The diversity of epiphytic lichens was assessed at 15 sites, established in the form of a circular area of 7.07 ha each, the central point (CP) of which was a previously selected tree inhabited by *Lobaria pulmonaria* thalli. Trees were then selected at this site to prepare a list of species. Beech trees (*Fagus sylvatica*) and less frequently sycamore trees (*Acer pseudoplatanus*), reaching a diameter at breast height of $d_{1,3} \geq 40$ cm, were selected, growing along three designated transects, radiating from the central point in accordance with the azimuth of 0°, 120° and 240°, and the host tree for

Table 1 Location of sites and habitat characteristics of studied forest areas in Polish Carpathians. Abbreviations: G1–G10 – sites located in Gorce Mts; B1–B5 – sites located in Bieszczady Mts; Fs – *Fagus sylvatica*; Aa – *Abies alba*; Pa – *Picea abies*; Ap – *Acer pseudoplatanus*. No. of forest division and age of oldest tree among dominant tree species according to on-line version of Bank of State Forests data (<https://www.bdl.lasy.gov.pl/portal/mapy>; last access 15.03.2023). Tree species mentioned as first have the main share in the stand composition.

Site	GPS	Forest division	Age of oldest tree species	Exposition	Altitude
G1/Kamienica	49°33'34.1"N, 20°12'17.1"E	122b	Fs – 135 y Aa – 135 y	N	930 m
G2/Bieniowe	49°33'19.6"N, 20°12'59.0"E	130a	Fs – 130 y Pa – 130 y	N	1,110 m
G3/Spaleniec	49°34'41.8"N, 20°13'49.0"E	111a	Fs – 110 y Aa – 110 y	NE	970 m
G4/Szyja	49°33'22.0"N, 20°06'58.2"E	41a	Fs – 135 y Aa – 135 y	E	1,180 m
G5/Zapadłe I	49°33'08.3"N, 20°08'11.0"E	106c	Fs – 150 y Pa – 150 y	SE	1,110 m
G6/Zapadłe II	49°33'09.9"N / 20°07'56.2"E	106g	Pa – 120 y Fs – 120 y	E	1,225 m
G7/Roztoka	49°33'23.4"N / 20°07'22.0"E	35a	Fs – 100 y Aa – 100 y	NW	1,065 m
G8/Kopieniec	49°33'56.8"N / 20°07'01.2"E	40a	Fs – 130 y Aa – 130 y	E	1,040 m
G9/Jaworzyna Kamienicka I	49°33'15.5"N / 20°09'51.9"E	127a	Fs – 150 y Pa – 150 y	N	1,149 m
G10/Jaworzyna Kamienicka II	49°33'18.2"N / 20°09'84.4"E	127a	Fs – 150 y Pa – 150 y	NE	1,174 m
B1/Muczne	49°08'10"N / 22°42'34"E	57g	Ap – 107 y Aa – 137 y	E	746 m
B2/Dźwiniacz I	49°06'47"N / 22°44'40"E	161b	Fs – 155 y Ap – 110 y	NE	859 m
B3/Procisne	49°09'16"N / 22°39'33"E	89f	Fs – 100 y Fs – 147 y	NE	975 m
B4/Tarnawa	49°06'03"N / 22°46'38"E	229c	Fs – 97 y Fs – 149 y	NW	840 m
B5/Dźwiniacz II	49°08'13"N / 22°45'02"E	65f	Aa – 115 y Fs – 160 y	E	880 m

L. pulmonaria. The transects were divided into three zones depending on the distance from the central point, named (i) $R = 50$ m, (ii) $R = 51$ –100 m, and (iii) $R = 101$ –150 m, corresponding respectively to a radius of 50 m, a radius section in the range of 51–100 m and a radius section in the range of 101–150 m. 28 trees were planned to be examined at each site (Figure 2). Exceptionally, when there were no trees of both species meeting the DBH criteria, beeches with a lower diameter at breast height were selected for sampling; however, in the absence of both phorophytes within 20 m of the transect, no sample trees were selected. Based on data for the three concentric zones, the diversity of lichens was also determined for zones with a radius of 100 m and 150 m, further named as zone $R = 100$ m and $R = 150$ m, respectively.

Species difficult to identify in the field were collected for laboratory analysis where a standard spot test reaction with ethanol solution of paraphenylenediamine, KOH, and NaClO (in the commercial form of ACE) and UV irradiation were applied, if necessary. Sterile thallus fragments were identified

by TLC thin-layer chromatography in eluent C (Orange et al., 2001). Species nomenclature was adopted from Printzen et al. (2022); for several species not listed in this paper, nomenclature from Index Fungorum (<https://www.indexfungorum.org>; accessed 12 January 2023) was used. Due to the ease of field mistakes in identifying some species recently described and macroscopically similar to each other, the research was limited to distinguishing collective taxa *Micarea micrococca* s.lat. (except for the characteristic species *M. byssacea* (Th. Fr.) Czarnota, Guzow-Krzem. & Coppins) and *Parmelia saxatilis* s.lat. (although *P. serrana* A. Crespo, M.C. Molina & D. Hawksw was also identified on single trees in Bieszczady Mts).

The obtained results were compiled in a database, distinguishing in each concentric zone threatened species that are red-listed in Poland (Cieśliński et al., 2006), lichen indicators of East-Central-European primeval forests (Motiejūnaitė et al., 2004) and species legally protected in Poland (RME, 2014a). To visually assess the similarity in lichen communities between sites and concentric zones, the detrended corre-

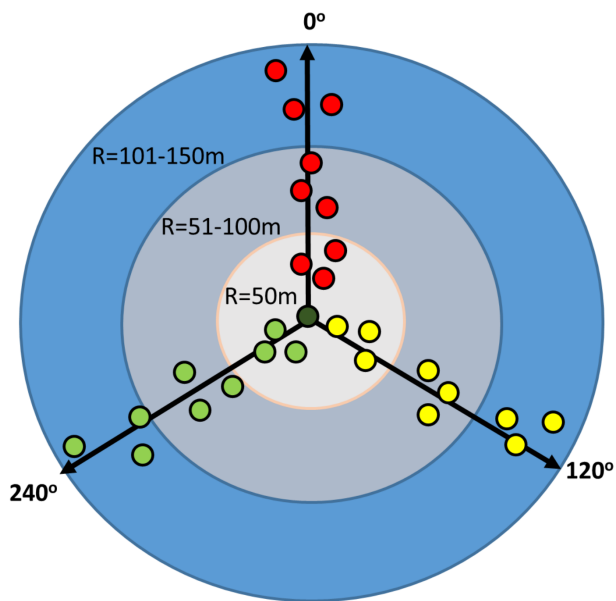


Figure 2 Scheme showing the distribution of sample trees in three analyzed concentric zones around the host-tree of *L. pulmonaria*.

spondence analysis (DCA) from the CANOCO v. 5 package was used, implementing the ‘detrending by segments’ option. The measure of species abundance was the number of trees inhabited by a given species in a given zone at a given site.

The significance of differences in lichen species diversity (the number of lichen species) between the sites and between the three zones ($R = 50$ m, $R = 51-100$ m, $R = 101-150$ m) around the tree-site of *L. pulmonaria* was tested by the non-parametric Kruskal–Wallis test. Dunn’s post hoc multiple comparison test was used to examine which zones differed significantly from each other. The homogeneity of variance was tested using the Brown–Forsythe test. The normality of the distribution of the random variable was tested using the Shapiro–Wilk test. The dependence of lichen diversity on zone size was examined using Spearman’s rank correlation coefficient (r_s). The biodiversity and structure of lichen communities were assessed using the Shannon–Wiener index (H) and the Pielou evenness index (J). The statistical analyses were performed using STATISTICA v. 13.1 at the significance level of $\alpha = 0.05$.

3. Results

A total of 157 species of lichenized and six species of lichenicolous fungi were found on 371 examined trees in zone $R = 150$ m, including 132, 116, 120, and 151 species within concentric zones $R = 50$ m, $R = 51-100$ m, $R = 101-150$ m, and $R = 100$ m (Table 2).

On average, 58 species of lichens were recorded at the study sites, and the number ranged from 42 species at the B4/Tarnawa site in the Bieszczady to 84 at the G10/Jaworzyna Kamienicka II site in the Gorce Mts. In eight out of 15 cases, the concentric zone up to 50 m was characterized by a greater number of species (on average 40 species) than at the least

one further zone, ranging from 23 at site B3/Procisne in the Bieszczady to 55 species at site G3/Spaleniec in Gorce Mts. The $R = 101-150$ m zone was characterized by a slightly higher average number of species than the $R = 51-100$ m zone, but the difference was insignificant (Table 3).

The share of the number of species in the zone $R = 50$ m in relation to the number of all species found at the site ranged from 46% to 85% (Figure 3), an average of 68.6%. The lowest share was recorded at the site B3/Procisne. Enlarging the concentric zone to a radius of 100 m resulted in an increase in the number of species from 2% at site G3/Spaleniec in Gorce Mts to as much as 38% at site B4/Tarnawa. The share of the number of species occurring in the zone $R = 100$ m in the scale of the studied sites in the Polish Carpathians increased significantly to the level of 76–97%, an average of 88.2% (Figure 3).

Species diversity and structure of lichen communities measured by the values of Shannon–Wiener index (H) and Pielou’s evenness index (J), respectively, despite differences in the absolute number of species, were similar in all concentric zones, both considered separately for the sites in Gorce Mts, and in Bieszczady Mts, and jointly in both Carpathian regions (Table 4). This was also confirmed by the insignificant result of the analysis of variance (Kruskal–Wallis test: Gorce Mts $p = 0.1811$, Bieszczady Mts $p = 0.6472$, Carpathians $p = 0.8246$) in contrast to the significant one, showing the difference in the number of species between at least two sites within and between each of the mountain ranges. As the analysis of Dunn’s multiple comparisons showed, the greatest differences in the number of species among the 15 analyzed sites were found at the sites G9/Jaworzyna Kamienicka I and G10/Jaworzyna Kamienicka II in Gorce Mts vs. B4/Tarnawa in Bieszczady Mts. The lichen species diversity of the site Jaworzyna Kamienicka I significantly differed moreover from the diversity of more than half of the other studied sites (Table 5).

Spearman’s rank correlation analysis ($r_s = 0.66$) indicated the existence of a statistically significant, strong, positive relationship between the size of the protection zone and the number of species.

In addition to the differences in the number of species between individual sites, the species composition of lichen communities also showed differences, and they were particularly visible between the two examined ranges of the Polish Carpathians (Figure 4). This was influenced not only by the effect of local habitat conditions, but also by the presence of many species recorded in the study zones in only one or the other mountain range (see Table 2) resulting from regional biological diversity in the Carpathian chain. Taking into account only the list of taxa exclusive to the region found in the research, the following were recorded only in Gorce Mts so far: *Bacidia biatorina*, *Micarea synotheoides*, *Puttea margaritella*, *Schismatomma pericleum*, and in Bieszczady Mts: *Bacidia laurocerasi*, *Biatora mendax*, *Chaenotheca chlorella*, *Inoderma byssaceum*, *Opegrapha vermicellifera*, *Parmelia submontana*, *Parmelina pastillifera* and *Pertusaria flavida* (Table 2).

Within individual sites, the similarity of lichen species compositions in subsequent zones is high, which means that in most cases shown by the DCA correspondence analysis, they grouped into separate assemblages (Figure 4). This proves,

Table 2 The list of lichenized and lichenicolous fungi found in concentric zones around 15 host-trees of *Lobaria pulmonaria* in Polish Carpathians. Abbreviations: R – radius around the host-tree of *Lobaria pulmonaria*; N – number of examined trees in each concentric zone; L – number of trees hosting particular lichen species in each concentric zone; F – frequency; * – species found only in Gorce Mts; ** – species found only in Bieszczady Mts; # – lichenicolous fungus.

Species	R = 50 m N = 140		R = 51–100 m N = 115		R = 101–150 m N = 116		R = 100 N = 255		R = 150 m N = 371	
	L	F	L	F	L	F	L	F	L	F
** <i>Absconditella lignicola</i> Vězda & Pišút					1	0.9			1	0.3
** <i>Acrocordia gemmata</i> (Ach.) A.Massal.	3	2.1	1	0.9	1	0.9	4	1.6	5	1.3
<i>Agonimia repleta</i> Czarnota & Coppins	38	27.1	21	18.3	14	12.1	59	23.1	73	19.7
<i>Alyxoria varia</i> (Pers.) Ertz & Tehler	9	6.4	4	3.5	5	4.3	13	5.1	18	4.9
<i>Amandinea punctata</i> (Hoffm.) Coppins & Scheid.	1	0.7	1	0.9	1	0.9	2	0.8	3	0.8
<i>Anisomeridium polypori</i> (Ellis & Everh.) M.E.Barr	10	7.1	9	7.8	6	5.2	19	7.5	25	6.7
<i>Arthonia didyma</i> Körb.	3	2.1	1	0.9	4	3.4	4	1.6	8	2.2
<i>Arthonia radiata</i> (Pers.) Ach.	7	5.0	12	10.4	5	4.3	19	7.5	24	6.5
<i>Arthonia ruana</i> A.Massal.	4	2.9	2	1.7	3	2.6	6	2.4	9	2.4
* <i>Arthonia vinosa</i> Leight.	4	2.9	2	1.7	3	2.6	6	2.4	9	2.4
*# <i>Arthrorhaphis aeruginosa</i> R.Sant. & Tønsberg	8	5.7	5	4.4	2	1.7	13	5.1	15	4.0
* <i>Bacidia biatorina</i> (Körb.) Vain.	1	0.7					1	0.4	1	0.3
** <i>Bacidia laurocerasi</i> (Duby) Zahlbr.	1	0.7					1	0.4	1	0.3
<i>Bacidia rubella</i> (Hoffm.) A.Massal.	5	3.6	1	0.9	1	0.9	6	2.4	7	1.9
<i>Bacidina modesta</i> (Vain.) S.Ekman	26	18.6	11	9.6	19	16.4	37	14.5	56	15.1
* <i>Bacidina phacodes</i> (Körb.) Vězda	3	2.1					3	1.2	3	0.8
<i>Biatora chrysantha</i> (Zahlbr.) Printzen	8	5.7	7	6.1	6	5.2	15	5.9	21	5.7
<i>Biatora efflorescens</i> (Hedl.) Räsänen	41	29.3	29	25.2	31	26.7	70	27.5	101	27.2
* <i>Biatora globulosa</i> (Flörke) Fr.	1	0.7			2	1.7	1	0.4	3	0.8
<i>Biatora mendax</i> Anzi	1	0.7					1	0.4	1	0.3
* <i>Biatora ocelliformis</i> (Nyl.) Arnold	1	0.7					1	0.4	1	0.3
<i>Biatora pontica</i> Printzen & Tønsberg	6	4.3	5	4.4	5	4.3	11	4.3	16	4.3
<i>Biatoridium monasteriense</i> Körb.	5	3.6	2	1.7	2	1.7	7	2.8	9	2.4
<i>Bryoria fuscescens</i> (Gyeln.) Brodo & D.Hawksw.	1	0.7					1	0.4	1	0.3
** <i>Bryostigma lapidicola</i> (Taylor) S.Y.Kondr. & Hur			1	0.9			1	0.4	1	0.3

Continued on next page

Table 2 Continued.

Species	R = 50 m		R = 51–100 m		R = 101–150 m		R = 100		R = 150 m	
	N = 140		N = 115		N = 116		N = 255		N = 371	
	L	F	L	F	L	F	L	F	L	F
<i>Buellia disciformis</i> (Fr.) Mudd	1	0.7	5	4.4	3	2.6	6	2.4	9	2.4
<i>Buellia griseovirens</i> (Sm.) Almb.	6	4.3	3	2.6	7	6.0	9	3.5	16	4.3
** <i>Candelariella efflorescens</i> R.C.Harris & W.R.Buck	1	0.7					1	0.4	1	0.3
* <i>Candelariella xanthostigma</i> (Ach.) Lettau	1	0.7			1	0.9	1	0.4	2	0.5
* <i>Catinaria atropurpurea</i> (Schaer.) Vězda & Poelt	1	0.7					1	0.4	1	0.3
<i>Cetrelia cetrarioides</i> (Duby) W.L.Culb. & C.F.Culb.	6	4.3	8	7.0	3	2.6	14	5.5	17	4.6
* <i>Cetrelia olivetorum</i> (Nyl.) W.L.Culb. & C.F.Culb.					1	0.9			1	0.3
* <i>Chaenotheca brachypoda</i> (Ach.) Tibell	1	0.7					1	0.4	1	0.3
** <i>Chaenotheca chlorella</i> (Ach.) Müll.Arg.			1	0.9			1	0.4	1	0.3
* <i>Chaenotheca ferruginea</i> (Sm.) Mig.	2	1.4			1	0.9	2	0.8	3	0.8
* <i>Chaenotheca furfuracea</i> (L.) Tibell	8	5.7			1	0.9	8	3.1	9	2.4
* <i>Chaenotheca stemonea</i> (Ach.) Müll.Arg.	3	2.1	3	2.6	2	1.7	6	2.4	8	2.2
** <i>Chrysothrix candelaris</i> (L.) J.R.Laundon			1	0.9			1	0.4	1	0.3
<i>Cladonia chlorophaea</i> (Sommerf.) Spreng.	6	4.3	4	3.5	8	6.9	10	3.9	18	4.9
<i>Cladonia coniocraea</i> (Flörke) Spreng.	70	50.0	51	44.4	53	45.7	121	47.5	174	46.9
<i>Cladonia digitata</i> (L.) Hoffm.	18	12.9	17	14.8	19	16.4	35	13.7	54	14.6
<i>Cladonia fimbriata</i> (L.) Fr.			1	0.9	3	2.6	1	0.4	4	1.1
* <i>Cladonia macilentata</i> Hoffm.			1	0.9			1	0.4	1	0.3
* <i>Cladonia pocillum</i> (Ach.) Grognot	1	0.7			1	0.9	1	0.4	2	0.5
* <i>Cladonia polydactyla</i> (Flörke) Spreng.					1	0.9			1	0.3
* <i>Cladonia pyxidata</i> (L.) Hoffm.	4	2.9	1	0.9	2	1.7	5	2.0	7	1.9
* <i>Cladonia squamosa</i> Hoffm.			1	0.9			1	0.4	1	0.3
<i>Coenogonium pinetii</i> (Ach.) Lücking & Lumbsch	62	44.3	46	40.0	45	38.8	108	42.4	153	41.2
<i>Diarthonis spadicea</i> (Leight.) Frisch, Ertz, Coppins & P.F.Cannon	13	9.3	10	8.7	10	8.6	23	9.0	33	8.9
<i>Dictyocatenulata alba</i> Finley & E.F.Morris	10	7.1	14	12.2	10	8.6	24	9.4	34	9.2
<i>Evernia prunastri</i> (L.) Ach.	3	2.1	2	1.7	2	1.7	5	2.0	7	1.9
* <i>Frutidella furfuracea</i> (Anzi) M.Westb. & M.Svenss.			2	1.7			2	0.8	2	0.5

Continued on next page

Table 2 Continued.

Species	R = 50 m		R = 51–100 m		R = 101–150 m		R = 100		R = 150 m	
	N = 140		N = 115		N = 116		N = 255		N = 371	
	L	F	L	F	L	F	L	F	L	F
* <i>Fuscidea arboricola</i> Coppins & Tønsberg	7	5.0	4	3.5	3	2.6	11	4.3	14	3.8
* <i>Fuscidea pusilla</i> Tønsberg	1	0.7	4	3.5	2	1.7	5	2.0	7	1.9
<i>Graphis scripta</i> (L.) Ach.	115	82.1	96	83.5	94	81.0	211	82.8	305	82.2
** <i>Gyalecta fagicola</i> (Arnold) Kremp.					1	0.9			1	0.3
<i>Hypocenomyce scalaris</i> (Ach.) M.Choisy			1	0.9	2	1.7	1	0.4	3	0.8
* <i>Hypogymnia farinacea</i> Zopf	1	0.7			2	1.7	1	0.4	3	0.8
<i>Hypogymnia physodes</i> (L.) Nyl.	67	47.9	58	50.4	58	50.0	125	49.0	183	49.3
** <i>Hypotrachyna afrorevoluta</i> (Krog & Swinscow) Krog & Swinscow	2	1.4			1	0.9	2	0.8	3	0.8
** <i>Hypotrachyna revoluta</i> (Flörke) Hale			1	0.9	1	0.9	1	0.4	2	0.5
** <i>Inoderma byssaceum</i> (Weigel) Gray			1	0.9			1	0.4	1	0.3
<i>Lecania croatica</i> (Zahlbr.) Kotlov	10	7.1	9	7.8	8	6.9	19	7.5	27	7.3
** <i>Lecanographa amylacea</i> (Pers.) Egea & Torrente			1	0.9			1	0.4	1	0.3
<i>Lecanora albella</i> (Pers.) Ach.			5	4.4	7	6.0	5	2.0	12	3.2
<i>Lecanora argentata</i> (Ach.) Malme	43	30.7	28	24.4	37	31.9	71	27.8	108	29.1
<i>Lecanora carpinea</i> (L.) Vain.	1	0.7	3	2.6	5	4.3	4	1.6	9	2.4
<i>Lecanora chlarotera</i> Nyl.	23	16.4	24	20.9	16	13.8	47	18.4	63	17.0
* <i>Lecanora compallens</i> Herk & Aptroot	1	0.7					1	0.4	1	0.3
* <i>Lecanora conizaeoides</i> Cromb.	5	3.6			2	1.7	5	2.0	7	1.9
* <i>Lecanora expallens</i> Ach.	6	4.3	7	6.1	5	4.3	13	5.1	18	4.9
** <i>Lecanora glabrata</i> (Ach.) Nyl.	2	1.4			2	1.7	2	0.8	4	1.1
<i>Lecanora intumescens</i> (Rebent.) Rabenh.	6	4.3	7	6.1	9	7.8	13	5.1	22	5.9
<i>Lecanora pulicaris</i> (Pers.) Ach.	13	9.3	9	7.8	6	5.2	22	8.6	28	7.5
<i>Lecanora substerilis</i> Malíček & Vondrák	5	3.6	4	3.5	5	4.3	9	3.5	14	3.8
* <i>Lecanora symmicta</i> (Ach.) Ach.	1	0.7					1	0.4	1	0.3
** <i>Lecanora thysanophora</i> R.C.Harris	1	0.7	4	3.5	1	0.9	5	2.0	6	1.6
* <i>Lecidea erythrophaea</i> Sommerf.	1	0.7					1	0.4	1	0.3
* <i>Lecidea nylanderii</i> (Anzi) Th.Fr.	8	5.7	7	6.1	10	8.6	15	5.9	25	6.7

Continued on next page

Table 2 Continued.

Species	R = 50 m		R = 51–100 m		R = 101–150 m		R = 100		R = 150 m	
	N = 140		N = 115		N = 116		N = 255		N = 371	
	L	F	L	F	L	F	L	F	L	F
<i>Lecidella elaeochroma</i> (Ach.) M.Choisy	17	12.1	16	13.9	16	13.8	33	12.9	49	13.2
<i>Lecidella subviridis</i> Tønsberg	14	10.0	11	9.6	8	6.9	25	9.8	33	8.9
<i>Lepra amara</i> (Ach.) Hafellner	30	21.4	17	14.8	15	12.9	47	18.4	62	16.7
** <i>Lepraria eburnea</i> J.R.Laundon	1	0.7			1	0.9	1	0.4	2	0.5
<i>Lepraria elobata</i> Tønsberg	78	55.7	65	56.5	62	53.4	143	56.1	205	55.3
<i>Lepraria finkii</i> (B.de Lesd.) R.C.Harris	112	80.0	83	72.2	88	75.9	195	76.5	283	76.3
<i>Lepraria incana</i> (L.) Ach.	34	24.3	22	19.1	27	23.3	56	22.0	83	22.4
* <i>Lepraria jackii</i> Tønsberg	29	20.7	23	20.0	28	24.1	52	20.4	80	21.6
<i>Lepraria ridigula</i> (B.de Lesd.) Tønsberg	2	1.4	3	2.6	4	3.4	5	2.0	9	2.4
<i>Lepraria vouauxii</i> (Hue) R.C.Harris	6	4.3	7	6.1	7	6.0	13	5.1	20	5.4
<i>Lobaria pulmonaria</i> (L.) Hoffm.	15	10.7					15	5.9	15	4.0
<i>Lopadium disciforme</i> (Flot.) Kullh.	4	2.9			4	3.4	4	1.6	8	2.2
<i>Loxospora elatina</i> (Ach.) A.Massal.	16	11.4	16	13.9	16	13.8	32	12.6	48	12.9
<i>Melanelixia glabratula</i> (Lamy) Sandler & Arup	77	55.0	66	57.4	62	53.4	143	56.1	205	55.3
<i>Menegazzia terebrata</i> (Hoffm.) A.Massal.	2	1.4	1	0.9	4	3.4	3	1.2	7	1.9
* <i>Micarea byssacea</i> (Th.Fr.) Czarnota, Guzow-Krzem. & Coppins	4	2.9	6	5.2	2	1.7	10	3.9	12	3.2
<i>Micarea micrococca</i> s. lat.	6	4.3	9	7.8	11	9.5	15	5.9	26	7.0
* <i>Micarea soralifera</i> Guzow-Krzem., Czarnota, Łubek & Kukwa			1	0.9			1	0.4	1	0.3
* <i>Micarea synotheoides</i> (Nyl.) Coppins					1	0.9			1	0.3
*# <i>Monodictys epilepraria</i> Kukwa & Diederich					1	0.9			1	0.3
* <i>Mycoblastus sanguinarius</i> (L.) Norman					1	0.9			1	0.3
* <i>Nephromopsis chlorophylla</i> (Willd.) Divakar, A.Crespo & Lumbsch					1	0.9			1	0.3
<i>Normandina pulchella</i> (Borrer) Nyl.	2	1.4					2	0.8	2	0.5
<i>Ochrolechia androgyna</i> (Hoffm.) Arnold	12	8.6	8	7.0	15	12.9	20	7.8	35	9.4
* <i>Ochrolechia arborea</i> (Kreyer) Almb.	1	0.7					1	0.4	1	0.3
** <i>Ochrolechia bachusiensis</i> H.Magn.	1	0.7	2	1.7			3	1.2	3	0.8
<i>Opegrapha niveotra</i> (Borrer) J.R.Laundon	3	2.1	1	0.9	1	0.9	4	1.6	5	1.3

Continued on next page

Table 2 Continued.

Species	R = 50 m N = 140		R = 51-100 m N = 115		R = 101-150 m N = 116		R = 100 N = 255		R = 150 m N = 371	
	L	F	L	F	L	F	L	F	L	F
** <i>Opegrapha vermicellifera</i> (Kunze) J.R.Laundon	1	0.7	1	0.9			2	0.8	2	0.5
<i>Opegrapha vulgata</i> (Ach.) Ach.	21	15.0	14	12.2	9	7.8	35	13.7	44	11.9
<i>Parmelia saxatilis</i> s. lat.	40	28.6	36	31.3	28	24.1	76	29.8	104	28.0
** <i>Parmelia submontana</i> Hale			2	1.7	1	0.9	2	0.8	3	0.8
<i>Parmelia sulcata</i> Taylor	1	0.7	3	2.6	4	3.4	4	1.6	8	2.2
** <i>Parmelina pastillifera</i> (Harm.) Hale	1	0.7					1	0.4	1	0.3
<i>Parmeliopsis ambigua</i> (Hoffm.) Nyl.	10	7.1	8	7.0	6	5.2	18	7.1	24	6.5
<i>Parmeliopsis hyperopta</i> (Ach.) Arnold	3	2.1	2	1.7	1	0.9	5	2.0	6	1.6
* <i>Peltigera degenii</i> Gyeln.	1	0.7					1	0.4	1	0.3
** <i>Peltigera horizontalis</i> (Huds.) Baumg.	1	0.7					1	0.4	1	0.3
** <i>Peltigera praetextata</i> (Sommerf.) Zopf	4	2.9	1	0.9	1	0.9	5	2.0	6	1.6
** <i>Pertusaria coccodes</i> (Ach.) Nyl.	4	2.9	1	0.9	1	0.9	5	2.0	6	1.6
<i>Pertusaria coronata</i> (Ach.) Th.Fr.	5	3.6	7	6.1	2	1.7	12	4.7	14	3.8
** <i>Pertusaria flavida</i> (DC.) J.R.Laundon	2	1.4	1	0.9			3	1.2	3	0.8
<i>Pertusaria leioplaca</i> (Ach.) DC.	5	3.6	9	7.8	3	2.6	14	5.5	17	4.6
<i>Pertusaria pertusa</i> (L.) Tuck.	4	2.9	8	7.0	4	3.4	12	4.7	16	4.3
* <i>Pertusaria pupillaris</i> (Nyl.) Th.Fr.	5	3.6	2	1.7	3	2.6	7	2.8	10	2.7
<i>Phaeophyscia endophoenicea</i> (Harm.) Moberg	1	0.7	3	2.6	2	1.7	4	1.6	6	1.6
<i>Phlyctis argena</i> (Spreng.) Flot.	88	62.9	72	62.6	64	55.2	160	62.8	224	60.4
* <i>Piccolia ochrophora</i> (Nyl.) Hafellner					1	0.9			1	0.3
* <i>Placynthiella dasaea</i> (Stirt.) Tønsberg					1	0.9			1	0.3
* <i>Placynthiella icmalea</i> (Ach.) Coppins & P.James			1	0.9			1	0.4	1	0.3
<i>Platismatia glauca</i> (L.) W.L.Culb. & C.F.Culb.	31	22.1	33	28.7	28	24.1	64	25.1	92	24.8
<i>Porina leptalea</i> (Durieu & Mont.) A.L.Sm.	11	7.9	6	5.2	6	5.2	17	6.7	23	6.2
* <i>Pseudevernia furfuracea</i> (L.) Zopf	2	1.4			1	0.9	2	0.8	3	0.8
<i>Pseudosagedia aenea</i> (Wallr.) Hafellner & Kalb	45	32.1	37	32.2	47	40.5	82	32.2	129	34.8
<i>Pseudoschismatomma rufescens</i> (Pers.) Ertz & Tehler	2	1.4	1	0.9	4	3.4	3	1.2	7	1.9
** <i>Punctelia jeckeri</i> (Roum.) Kalb	1	0.7	1	0.9			2	0.8	2	0.5

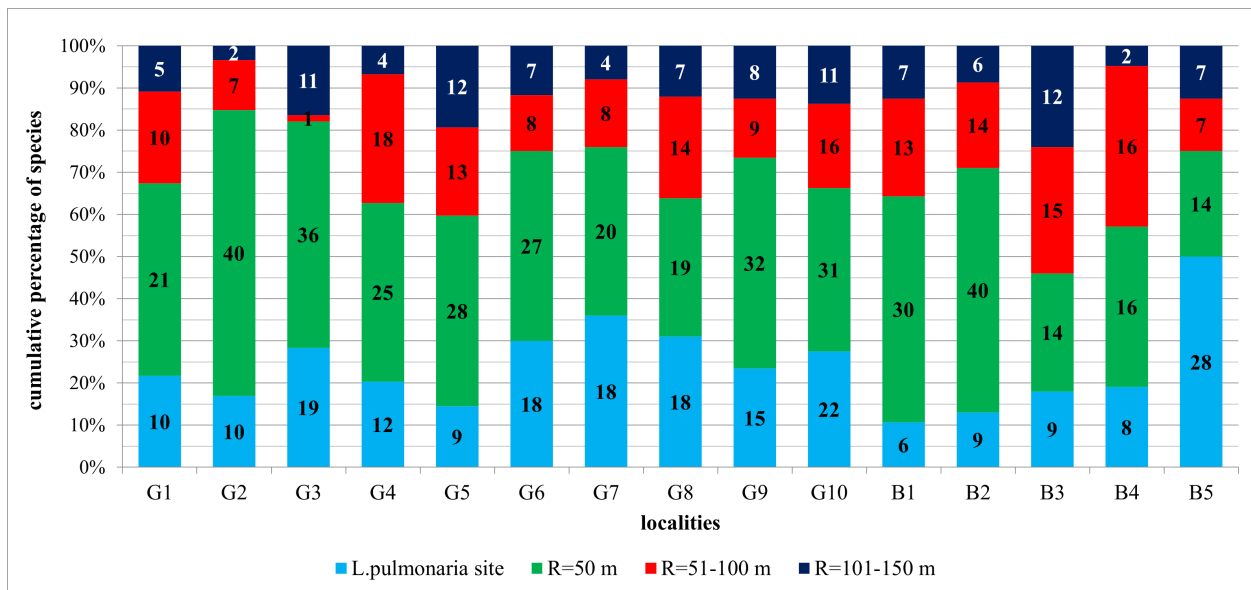
Continued on next page

Table 2 Continued.

Species	R = 50 m N = 140		R = 51–100 m N = 115		R = 101–150 m N = 116		R = 100 N = 255		R = 150 m N = 371		
	L	F	L	F	L	F	L	F	L	F	
<i>*Puttea margaritella</i> (Hulting) S. Stenroos & Huhtinen			1	0.9				1	0.4	1	0.3
<i>Pyrenula nitida</i> (Weigel) Ach.	46	32.9	37	32.2	33	28.4	83	32.6	116	31.3	
<i>Ramalina farinacea</i> (L.) Ach.	5	3.6	3	2.6	7	6.0	8	3.1	15	4.0	
<i>Ramalina pollinaria</i> (Westr.) Ach.	9	6.4	6	5.2	5	4.3	15	5.9	20	5.4	
<i>Rinodina efflorescens</i> Malme	1	0.7			1	0.9	1	0.4	2	0.5	
<i>Ropalospora viridis</i> (Tønsberg) Tønsberg	44	31.4	34	29.6	37	31.9	78	30.6	115	31.0	
<i>*cf. Schaereria corticola</i> Muhr & Tønsberg	1	0.7	2	1.7			3	1.2	3	0.8	
<i>*Schistomma pericleum</i> (Ach.) Branth & Rostr.					1	0.9			1	0.3	
<i>Scoliciosporum chlorococcum</i> (Stenh.) Vězda	5	3.6	8	7.0	9	7.8	13	5.1	22	5.9	
<i>*Scoliciosporum sarothamni</i> (Vain.) Vězda	1	0.7	2	1.7	1	0.9	3	1.2	4	1.1	
<i>**Scoliciosporum umbrinum</i> (Ach.) Arnold					1	0.9			1	0.3	
<i>*Scutula circumspecta</i> (Vain.) Kistenich, Timdal, Bendiksy & S.Ekman			1	0.9			1	0.4	1	0.3	
<i>*species sterile 1</i>	1	0.7					1	0.4	1	0.3	
<i>*species sterile 2</i>	1	0.7	1	0.9			2	0.8	2	0.5	
<i>*Swinscowa stigmatella</i> (Ach.) S.H.Jiang, Lücking & Sérus.	1	0.7	1	0.9			2	0.8	2	0.5	
<i>Thelotrema lepadinum</i> (Ach.) Ach.	4	2.9					4	1.6	4	1.1	
<i>Toniniopsis separabilis</i> (Nyl.) Gerasimova & A.Beck	6	4.3	6	5.2	5	4.3	12	4.7	17	4.6	
<i>*Trapelia corticola</i> Coppins & P.James	9	6.4	4	3.5	6	5.2	13	5.1	19	5.1	
<i>*Trapeliopsis granulosa</i> (Hoffm.) Lumbsch			2	1.7			2	0.8	2	0.5	
<i>*Trapeliopsis pseudogranulosa</i> Coppins & P.James	7	5.0	4	3.5	2	1.7	11	4.3	13	3.5	
<i>*#Tremella cladoniae</i> Diederich & M.S.Christ.			1	0.9			1	0.4	1	0.3	
<i>*#Tremella hypogymniae</i> Diederich & M.S.Christ.	1	0.7					1	0.4	1	0.3	
<i>*#Tremella lichenicola</i> Diederich	2	1.4	2	1.7	4	3.4	4	1.6	8	2.2	
<i>*Usnea dasopoga</i> (Ach.) Nyl.	13	9.3	14	12.2	10	8.6	27	10.6	37	10.0	
<i>*Usnea subfloridana</i> Stirt.	1	0.7	1	0.9	1	0.9	2	0.8	3	0.8	
<i>Varicellaria hemisphaerica</i> (Flörke) I.Schmitt & Lumbsch	14	10.0	8	7.0	10	8.6	22	8.6	32	8.6	
<i>Violella fucata</i> (Stirt.) T.Sprib.	45	32.1	44	38.3	39	33.6	89	34.9	128	34.5	
<i>*Xylopsora caradocensis</i> (Nyl.) Bendiksy & Timdal	1	0.7					1	0.4	1	0.3	
<i>Zwackhia viridis</i> (Ach.) Poetsch & Schied.	13	9.29	9	7.83	6	5.04	28	7.49	22	8.63	
No. of species	132		116		120		151		163		

Table 3 Number of lichen species in examined concentric zones around the *Lobaria pulmonaria* host-trees in Polish Carpathians. Abbreviations: R – radius around the host-tree of *L. pulmonaria*; G – sites in Gorce Mts; B – sites in Bieszczady Mts.

Site	Zone				
	R = 50 m	R = 51–100 m	R = 101–150 m	R = 100 m	R = 150 m
G1/Kamienica	31	28	22	41	46
G2/Bieniowe	50	31	30	57	59
G3/Spaleniec	55	20	38	56	67
G4/Szyja	37	32	41	55	56
G5/Zapadłe I	37	40	38	50	62
G6/Zapadłe II	45	36	33	53	60
G7/Roztoka	38	31	26	46	50
G8/Kopieniec	37	40	33	51	58
G9/Jaworzyna Kamienicka I	47	42	49	56	64
G10/Jaworzyna Kamienicka II	53	48	52	69	80
B1/Muczne	36	30	39	49	56
B2/Dźwiniacz I	49	45	34	63	69
B3/Procisne	23	34	40	38	50
B4/Tarnawa	24	34	21	40	42
B5/Dźwiniacz II	42	31	38	49	56
Average for 15 sites	40.3	34.8	35.6	51.5	58.3

**Figure 3** Contribution of lichen species in examined concentric zones around the *Lobaria pulmonaria* host-trees in the Polish Carpathians. For an explanation of research plots designations see Table 3.

together with the equalized Shannon-Wiener diversity indices (H'), the relative biological homogeneity of habitat patches selected by *Lobaria pulmonaria* for colonization. At the same time, there are differences between the sites within the same mountain range. The most different lists of species within the Bieszczady Mts concern sites B1 and B3 and sites G7, G8, and G1 in the Gorce Mts.

A total of 25 species of primeval forest lichen indicators were found, of which six occurred only in the Gorce Mts and seven only in the Bieszczady Mts. Many species were recorded in

small amounts, some only once. It has been shown that the zone up to 50 m protected the vast majority of lichens that preferred the ecological conditions of old-growth forests (approx. 70%), as well in the case of both Carpathian ranges considered separately as jointly (Figure 5). However, this zone did not protect seven species.

The extension of the zone to $R = 100$ m also increased the share of lichen species protected in Poland from 77% to as much as 95%. In the case of Gorce Mts, this increase was insignificant and amounted to only 6%, but in the case of Bieszczady Mts,

Table 4 Values of Shannon-Wiener index (H) and Pielou's evenness index (J) for examined concentric zones around *Lobaria pulmonaria* host-trees in the Polish Carpathians. R – radius around the host-tree of *L. pulmonaria*.

Diversity index	Regions	Concentric zones		
		$R = 50$ m	$R = 51-100$ m	$R = 101-150$ m
Shannon-Wiener index (H)	Polish Carpathians	4.0092	3.9650	3.9688
	Gorce Mts	3.9549	3.8753	3.9075
	Bieszczady Mts	3.5446	3.5922	3.5870
Pielou's evenness index (J)	Polish Carpathians	0.8198	0.8311	0.8276
	Gorce Mts	0.8414	0.8612	0.8396
	Bieszczady Mts	0.8373	0.8373	0.8334
Shannon-Wiener index (H)	Polish Carpathians	$R = 50$ m	$R = 100$ m	$R = 150$ m
	Gorce Mts	4.0092	4.0229	4.0239
	Bieszczady Mts	3.9549	3.9532	3.9658
Pielou's evenness index (J)	Polish Carpathians	3.5446	3.6271	3.6371
	Gorce Mts	0.8198	0.7987	0.7881
	Bieszczady Mts	0.8414	0.8243	0.8036
		0.8373	0.8061	0.7950

the extension of the protection zone increased the number of protected species by as much as 1/3.

A total of 30 endangered and critically endangered species from the Polish red list of lichens were found, of which 10 were only in Gorce Mts and seven only in Bieszczady Mts. As in the case of the primeval forest indicators, the zone up to 50 m protected most of these species in each of the mountain ranges separately (69% in Gorce Mts and 58% in Bieszczady Mts) and jointly (70%); nine species were not found in any of these bands in the zone up to 50 m. The extension of the zone to $R = 100$ m significantly extended the protective umbrella for this group of red-listed lichens overall by as much as 20% and in Bieszczady Mts alone by as much as 37%. It is worth noting that out of the six identified critically endangered species, only two were found in the smallest zone (Figure 6).

4. Discussion

4.1. Zonal protection as a form of biodiversity conservation

The term 'biological diversity' became widely known with the adoption by the international community of the Convention on biological diversity (CBD) during Earth Summit in Rio de Janeiro in 1992. Protection of biological diversity at three levels of complexity: genetic, species and ecosystem, then became one of the main directions of nature protection in the world. The implementation of this model in practice resulted in, among others, territorial protection legislation for particularly valuable species with specific habitat requirements (e.g., Aguilar-Støen & Dhillon, 2003; BiH Regulation, 2009; Huft & Muttenzer, 2017; Prip, 2018; UNEP, 1992; Zimmermann et al., 2003).

Zonal nature protection has also gained recognition and application in Poland (RME, 2004, 2014a, 2014b, 2016), especially in relation to threatened birds (e.g., white-tailed eagle, golden eagle, black stork) and mammals in the breeding

season (e.g., Jakubiec & Zyśk-Gorczyńska, 2012; Loch, 2010; Mikusek, 2012; Mizera, 2006; Zawadzki et al., 2020, 2022), but also to lichenized fungi (Ginszt et al., 2022; Kościelniak & Betleja, 2015; Kubiak et al., 2017; Ryś, 2007). The intention of using this form of protection is to protect the breeding and rearing area by conserving the habitat and ecological conditions that are conducive to the presence and spread of the protected species. Polish legislative acts define measurably the maximum size of zone but do not precisely define the methods of use within them, leaving the possibility of creating the zone and the selection of the most beneficial action to the administrative services appointed for this purpose. In most cases, creating a zone is understood as a form of passive protection, recognizing that this method of protection best meets the requirements of the protected species. As the zones are created for forest species, their areas, often many hectares long (e.g., time zones used during the breeding season of the black stork can reach 78.5 ha), constitute limitations in the economic use of forests, at least temporarily excluding these areas from harvesting and breeding treatments. The maximum size of these zones seems to be more or less speculation by experts, which in Poland has only recently been subject to scientific verification (Zawadzka et al., 2017). It is no different with regard to the size of zones proposed for lichens. Therefore, the legal reduction of the radius of the zone from 100 m, which was in force in 2004–2014, to the current radius of 50 m, was supposed to be a speculative compromise between the need for species protection and the economic viability of forest management. This action, like the previous one, requiring the creation of zones with a radius of 100 m, was purely administrative in nature and was not supported by any empirical data that would justify both the need to protect the lichen species itself and its umbrella role in the context of zonal protection of stenotopic species. The research results presented in our work are the first to address this issue, and their application nature can be used to verify the correctness of official orders and restrictions. In view of the ongoing discussion in recent years on the legitimacy of uniform patterns of species protection throughout Poland and

Table 5 Results of the analysis of Dunn's multiple (two-tailed) comparisons between the number of lichen species found on each examined tree at each sampled site located in the Polish Carpathians. Only significant differences at $p < 0.05$ level have been showed (for more precise results, see Table S1).

Site	G1/Kamienica	G2/Bieniowe	G3/Spalaniec	G4/Szyja	G5/Zapadłe I	G6/Zapadłe II	G7/Roztoka	G8/Kopieniec I	G9/Jaworzyna Kamienica I	G10/Jaworzyna Kamienicka II	B1/Muczne	B2/Dźwiniacz I	B3/Procisne	B4/Tarnawa	B5/Dźwiniacz II
G1/Kamienica			•	•		•			•	•					•
G2/Bieniowe									•						
G3/Spalaniec	•												•		
G4/Szyja	•												•		
G5/Zapadłe I															
G6/Zapadłe II	•												•		
G7/Roztoka									•	•					
G8/Kopieniec									•	•					
G9/Jaworzyna Kamienica I	•	•					•	•			•	•	•		•
G10/Jaworzyna Kamienicka II	•						•	•			•		•		•
B1/Muczne									•	•					
B2/Dźwiniacz I									•						
B3/Procisne			•	•		•			•	•				•	
B4/Tarnawa	•												•		
B5/Dźwiniacz II									•	•					

the reasonableness of restrictions caused by zonal protection in general (Fałtynowicz, 2021a, 2021b, 2021c), undertaking this research topic on the eve of subsequent legislative changes becomes particularly important.

4.2. *Lobaria pulmonaria* as a species predisposed to the role of an umbrella species

Among the 11 species of lichens requiring zonal protection under Polish law, only *Lobaria pulmonaria* has been the subject of many studies around the world, specifying its biology, phylogeography, dispersion, and ecological requirements (e.g., Di Nuzzo et al., 2022; Rubio-Salcedo et al., 2015; Scheidegger et al., 2012). Its undoubted umbrella role was mainly reduced to treating this species as a forest stenobiont, requiring long ecological continuity of the nearest environment and the presence of natural habitats (Campbell & Fredeen, 2004; Nascimbene et al., 2010, 2013). The determining factors seem to be, above all, the high forest air humidity, the temperature, and the level of precipitation (Muir et al., 1997), which in the time of global climate change as continental influences increase, are becoming increasingly important for this species (Khanov & Pshegusov, 2021; Nascimbene et al., 2016).

Lobaria pulmonaria usually inhabits old-growth forests, which is why it is perceived as an indicator of forest ecological continuity (e.g., Brunialti et al., 2015b; Whittet & Ellis, 2013), which reacts negatively to changes in the stand structure

caused by forest management and human activity (Di Nuzzo et al., 2022; Edman et al., 2008; Jüriado & Liira, 2010; Otálora et al., 2011). The sensitivity of this species and its high ecological requirements make it a good indicator of key habitats for relic and rare epiphytic lichens in autochthonous or ancient forests (Brunialti et al., 2015a; Motiejūnaitė et al., 2004; Nilsson et al., 1995; Paoli et al., 2019).

It also inhabits managed forests, but its frequency is lower than in primeval forests. The reason for this is forest fragmentation, leading to disturbances in the naturalness of natural processes (Scheidegger et al., 2012). The lack of age and structural continuity of stands shaped by anthropogenic disturbances is an obstacle to the sexual reproduction of heterothallic *L. pulmonaria*, leading to a decrease in its genetic diversity and imposing clonality (Singh et al., 2015). However, the effectiveness of vegetative propagation, which is the main method of dispersal of the species, is limited to short distances (Ronnås et al., 2017; Werth et al., 2014) and is possible only several dozen years after establishing a symbiotic association (Scheidegger & Goward, 2002), during which maintaining optimal microhabitat conditions is sometimes impossible. Larger gaps in stands cause negative changes in humidity and light ratios (Bianchi et al., 2020; Eaton & Ellis, 2014; Hilmo et al., 2012; Paoli et al., 2019; Walser et al., 2004), factors determining the development of *L. pulmonaria* (e.g., Di Nuzzo et al., 2022; Gauslaa et al., 2007).

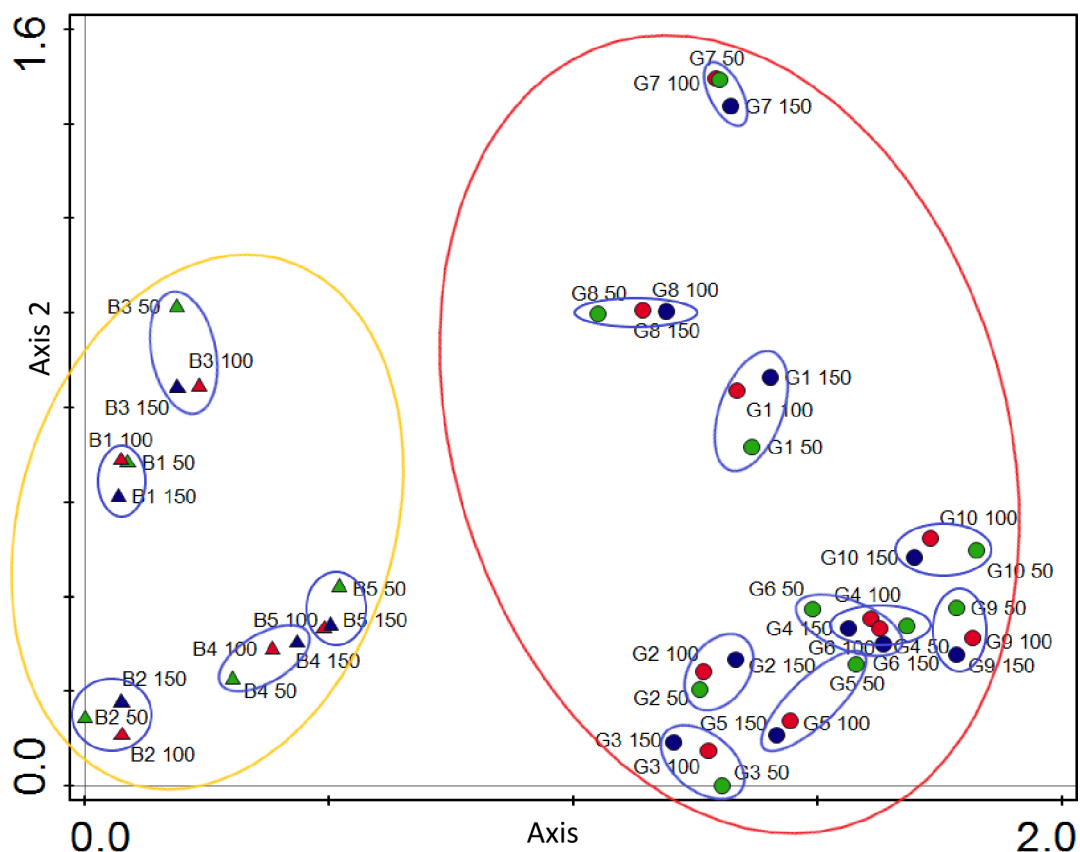


Figure 4 Detrended correspondence analysis (DCA) diagram visualizing differences in the lichen species diversity related to examined circular zones around *Lobaria pulmonaria* host-trees in the Polish Carpathians. The two axes explain together 37.03% of the total variation in species composition (27.33% axis 1). Abbreviations: B1–B5 – localities in Bieszczady Mts, G1–G10 – localities in Gorce Mts (designations of the examined sites correspond to those given in Table 3).

In Poland, ancient forests currently cover a relatively small area. Large forest complexes of a primeval nature in north-eastern Poland deserve special mention, of which the Białowieża Primeval Forest is the most famous. The naturalness and compactness of the forest complexes of this area, as well as the large share of old trees, favor the occurrence of rich corticolous and wood-inhabiting lichen biota, including rare forest relics (Cieśliński & Czyżewska, 2002; Czerepko et al., 2021; Golubkov et al., 2011; Kukwa et al., 2008). *L. pulmonaria* was recorded in these areas at almost 300 sites, and in the area of the Białowieża and Augustów Forests also fruit-bearing individuals rarely were found in Poland (Matwiejuk, 2015; Matwiejuk & Zbyryt, 2013; Ryś, 2007).

In southern Poland, fragments of the Carpathian Primeval Forest preserved to this day are valuable complexes. The largest of them have survived in the Bieszczady Mts in the area of the Eastern Carpathians, where the natural and sometimes almost primeval nature of the forest makes it possible for many lichens, of which about 50% are endangered species at the national level. There is also the largest mountain population of *L. pulmonaria* in Poland (Kościelniak, 2013; Kościelniak & Betleja, 2015), including individuals forming large thalli, sometimes also with apothecia. At least 170 sites of this species were recorded in the Stuposiany Forest District, where the study was carried out as a part of this

research (RDOŚ; letter reference WSI.402.215.2020.RW.2 of 16.09.2020).

Fragments of the ancient Carpathian forests have also been preserved in the Western Carpathians, e.g., in the Gorce range, which is a current refuge for over 500 species of lichens (Czarnota, 2010). Nevertheless, the Gorce population of *L. pulmonaria* currently occupies only 10 sites located in the strict protection area of the Gorce National Park, both in those parts of the forest that have been shaped almost exclusively by natural processes for decades and in those that were covered with a form of protection only after the establishing of the national park. *L. pulmonaria* thalli, which show signs of degeneration, are usually small, reaching a maximum size of several centimetres in individual cases. However, no fruiting individuals were found despite the documented long-term growth of some of them (Czarnota, unpublished).

4.3. The importance of the size of the protection zone for maintaining the species diversity of lichens

At the studied sites in the Polish Carpathians, in the widest zones $R \leq 150$, the average number of epiphytic species was 58 (Table 3), with the differences between the sites being almost double in extreme cases. Many sites in such expressed species diversity showed statistically confirmed differences both on

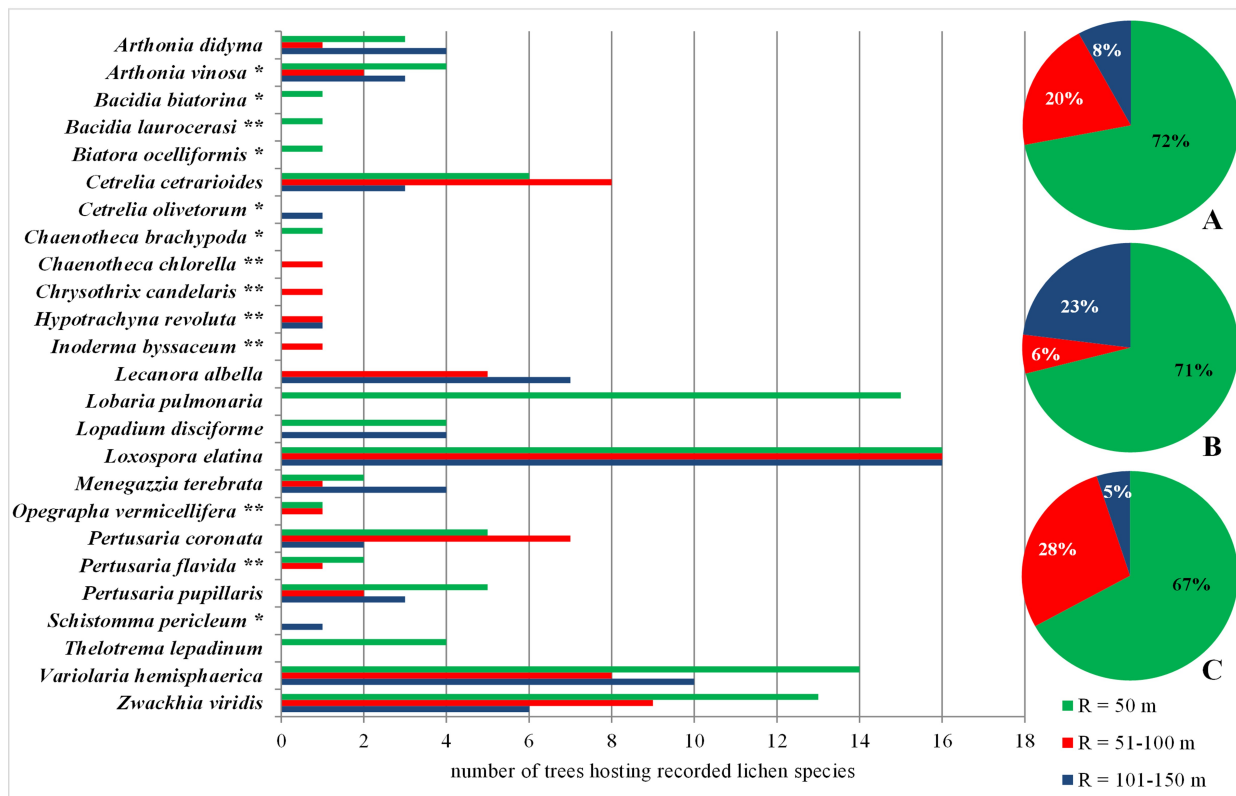


Figure 5 Lichen indicators of old-growth forests (Motiejūnaitė et al., 2004) found within the concentric zones around the *Lobaria pulmonaria* host-trees. Abbreviations: A – Polish Carpathians; B – Gorce Mts; C – Bieszczady Mts; * – species found only in Gorce Mts; ** – species found only in Bieszczady Mts; R – radius around the host-tree of *L. pulmonaria*. Pie charts show the percentage of new species in subsequent concentric zones.

local and regional scales (Table 5, Figure 4). It could be related to the age of the oldest trees in the stand (Table 2), and thus also to their thickness and indirectly to the origin of the ecosystem, which has been repeatedly demonstrated in other studies (Dymytrova et al., 2014; Fritz & Brunet, 2010; Fritz et al., 2009; Hofmeister et al., 2016; Zemanová et al., 2017). Older trees may provide a habitat for more epiphytic species due to the larger surface of the substrate, a more diverse structure of the bark, and a greater number of microhabitats (Kubiak & Osyczka, 2020; Ranius et al., 2008). Undoubtedly, the studied mountain ranges of the Polish Carpathians are characterized by a different lichen biota expressed not only in the number of species (compare Bielczyk, 2003 vs Kościelniak, 2013) but also in the communities, which was clearly shown by the DCA analysis (Figure 4). This is facilitated, among others, by geographic regionalism resulting in different habitat conditions of the Western and Eastern Carpathians, which is also visible in relation to other components of the biocoenosis (e.g., Piękoś-Mirkowa & Mirek, 2003).

The average number of lichen species in the zone $R = 50$ m (0.78 ha), including the *L. pulmonaria* host tree, was higher than in the more distant zones, despite the radius increasing the size of the next zone $R = 51-100$ m (2.355 ha) and $R = 101-150$ m (3.925 ha) (see Table 2). The share of the number of all species found in the $R = 50$ m zone in the total lichen diversity, reaching an average of 68%, could be considered by many as a satisfactory level, fulfilling the function of an umbrella species in an efficient nature protection system. Nevertheless, the extension of the protection zone to the surface area it had before 2014 shows that it would protect almost

90% of the epiphytic lichen biota growing under the umbrella of *L. pulmonaria*. It is obvious that, up to a certain limit, the number of species increases significantly with the increase in the studied area (Potenza et al., 2022). In a relatively homogeneous environment, where communities are devoid of prominent dominants (as indicated by the high Pielou homogeneity index ($J = \pm 0.8$), equalized in successive zones), this increase does not, however, imply statistically significant differences in the number of species between successive zones, as in the cases we studied. The quantitative analysis of species alone does not seem to be sufficient to fully assess the quality of the environment and the role of *L. pulmonaria* in the protection of key forest habitats for stenobiont lichens due to the considerable ecological plasticity of many forest species and, at the same time, the availability of many ecological niches that can be inhabited by a rich set of epiphytes in a homogeneous macro-habitat wide zone ($R = 150$ m, i.e. ± 7 ha).

The results of relative biological unification expressed by similar values of Shannon-Wiener (H) and Pielou (J) indices can be considered in two ways. On the one hand, they testify to the representative ecological nature of the umbrella protection zone. On the other hand, they prove that the areas outside the current protection zone are equally valuable in terms of species diversity and should also be treated as worth conserving. The assessment of umbrella protection looks different in terms of the possibility of protecting species that prefer primeval forests and highly endangered species. During the research, a total of 25 species from the first group and 30 red-listed species related to CR and EN categories (some of them represent both groups) were found (Figure 5, Figure 6).

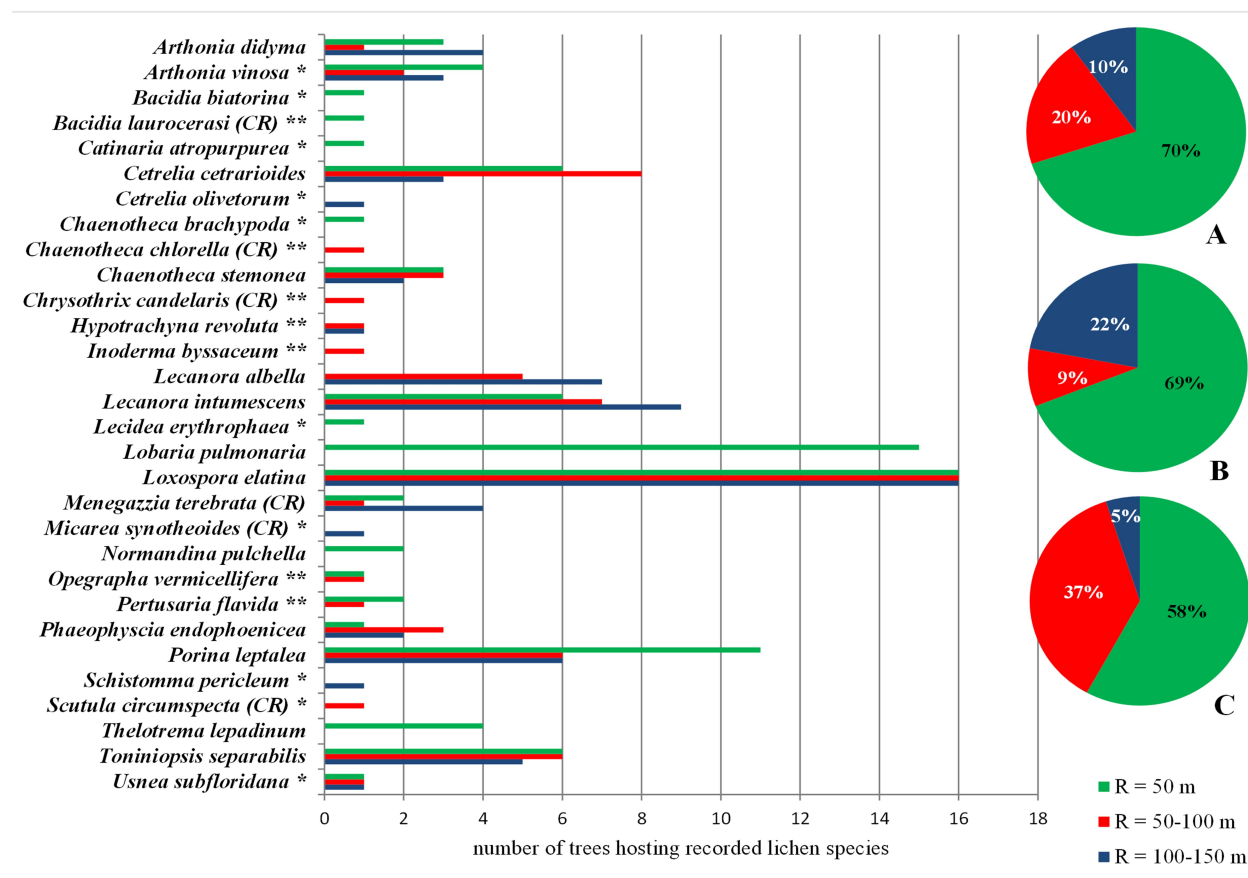


Figure 6 Endangered (EN) and critical endangered (CR) lichen species in Poland (Cieśliński et al., 2006; IUCN criteria) found within the concentric zones around the *Lobaria pulmonaria* host-trees. Abbreviations: A – Polish Carpathians; B – Gorce Mts; C – Bieszczady Mts; * – species found only in Gorce Mts; ** – species found only in Bieszczady Mts; R – radius around the host-tree of *L. pulmonaria*. Pie charts show the percentage of new species in subsequent concentric zones.

In both cases, the $R = 50$ m zone protected from 58% to as much as 72% of species, but increasing the zone to 100 m allows protection from 9% to 37% more valuable species. It should be noted that these species were relatively rare. Some of them were found only at single sites. Taking into account the results of the methodological work by Vondrák et al. (2016) in forests of a relict, primeval nature, it should be expected that, especially in the pool of endangered species, the share of rare microlichens could be even higher. The most numerous species was *Loxospora elatina*. Its presence was recorded 48 times, which translates into only 12% of all examined trees. It is also worth noting that few valuable species occurred in zones up to 50 m. Most of them were also present in further zones or only in them. This was the case among others, in the case of critically endangered species (CR category), of which only two out of six found occurred in the immediate vicinity of the *L. pulmonaria* host tree. Except for *Menegazzia terebrata*, each critically endangered species has only been recorded once.

Analyzing the lichen biota of valuable species, it can be concluded that the protection zone $R \leq 50$ m is insufficient for their full protection. These species also occur further away from the site of *L. pulmonaria*, and their small number makes it necessary to protect each thallus. Enlarging the zone within a stable forest habitat increases the dispersion success of lichens. *L. pulmonaria*, as an umbrella, can play

a very important role here. The protection of lichen species alone may be insufficient; in many cases it is also necessary to protect a habitat appropriate for the species in which dispersion has a chance of success. Optimal protection of lichens also requires knowledge of the biology of very rare and endangered species populations, which will help to develop an appropriate strategy for their protection (Scheidegger & Werth, 2009).

In the case of primeval forest indicators and endangered species, clear differences in the number of species were recorded after the extension of the protection zone to $R = 100$ m. In Gorce Mts, it could result in an increase in the share of protected species by 6% and 9%, respectively. The situation is different in the Bieszczady Mts, where this increases by 28% and 37%, respectively, which is as much as 1/3 of all species in this region. A much higher percentage of species found at a greater distance from the host-tree of *L. pulmonaria* in the Bieszczady Mts may nevertheless prove a less homogenous ecosystem manifested by a greater variety of habitats; perhaps resulting from different use of these forests?

5. Recommendations for forest management resulting from nature protection reasons

1. Treating the zone protection of *Lobaria pulmonaria* as a tool for protecting forest biodiversity and creating refu-

gia for valuable and endangered representatives of the Carpathian and Polish lichen biota.

2. Where possible, applying the legally required protection of forest lichen species in zones with a radius of not less than 100 m.
3. Exclusion from planned use of forest parts related to area division in places where species requiring zone protection are more abundant.
4. Inventory of species requiring zone protection at the stage of preparing forest management plans, along with planning the area scope of protection zones.

6. Supplementary material

The following supplementary material is available for this article:

Table S1. Results of the analysis of Dunn's multiple (two-tailed) comparisons between numbers of lichen species found at each sampled site located in the Polish Carpathians. Significant differences at $p < 0.05$ level have been highlighted in red.

Acknowledgments

The study was partially supported by the Gorce National Park (PC & MT). Our thanks go to Paweł Armatys (Gorce NP) for preparing the map of Gorce National Park.

References

- Aguilar-Støen, M., & Dhillon, S. S. (2003). Implementation of the convention on biological diversity in Mesoamerica: Environmental and developmental perspectives. *Environmental Conservation*, 30(2), 131–138. <https://doi.org/10.1017/S0376892903000110>
- Bianchi, E., Benesperi, R., Brunialti, G., Di Nuzzo, L., Fačkovcová, Z., Frati, L., Giordani, P., Nascimbene, J., Ravera, S., Vallese, C., & Paoli, L. (2020). Vitality and growth of the threatened lichen *Lobaria pulmonaria* (L.) Hoffm. in response to logging and implications for its conservation in Mediterranean oak forests. *Forests*, 11(9), Article 995. <https://doi.org/10.3390/f11090995>
- Bielczyk, U. (2003). The lichens and allied fungi of the Polish Western Carpathians. In U. Bielczyk (Ed.), *The lichens and allied fungi of the Polish Carpathians – An annotated checklist* (pp. 23–232). W. Szafer Institute of Botany, Polish Academy of Sciences.
- BiH Regulation. (2009). Hunting law. Article 17, paragraph 4. LEX-FAOC197889. <https://fmpvs.gov.ba>
- Brodo, I. M., Sharnoff, S. D., & Sharnoff, S. (2001). *Lichens of North America*. Yale University Press.
- Brunialti, G., Frati, L., & Ravera, S. (2015a). Ecology and conservation of the sensitive lichen *Lobaria pulmonaria* in Mediterranean old-growth forests. In P. Weber (Ed.), *Old-growth forests and coniferous forests. Ecology, habitat and conservation* (pp. 1–20). Nova Publisher.
- Brunialti, G., Frati, L., & Ravera, S. (2015b). Structural variables drive the distribution of the sensitive lichen *Lobaria pulmonaria* in Mediterranean old-growth forests. *Ecological Indicators*, 53, 37–42. <https://doi.org/10.1016/j.ecolind.2015.01.023>
- Campbell, J., & Fredeen, L. (2004). *Lobaria pulmonaria* abundance as an indicator of macrolichen diversity in Interior Cedar-Hemlock forests of east-central British Columbia. *Canadian Journal of Botany*, 82, 970–982. <https://doi.org/10.1139/b04-074>
- Caro, T. M. (2003). Umbrella species: Critique and lessons from East Africa. *Animal Conservation*, 6(2), 171–181. <https://doi.org/10.1017/S1367943003003214>
- Cieśliński, S., & Czyżewska, K. (2002). Porosty Puszczy Białowieskiej na tle innych kompleksów leśnych w Polsce północno-wschodniej [Lichens of Białowieża Primeval Forest in comparison with other forest complexes in North-Eastern Poland]. *Kosmos*, 51(4), 443–451.
- Cieśliński, S., Czyżewska, K., & Fabiszewski, J. (2006). Red list of the lichens in Poland. In Z. Mirek, K. Zarzycki, W. Wojewoda, & Z. Szelaż (Eds.), *Red list of plants and fungi in Poland* (pp. 71–89). W. Szafer Institute of Biology, Polish Academy of Sciences.
- Czarnota, P. (2000). Porosty Gorceńskiego Parku Narodowego. Cz. I. Wykaz i rozmieszczenie gatunków [The lichens of the Gorce National Park. Part I. List and distribution of species]. *Parki Narodowe i Rezerваты Przyrody*, 19(1), 3–73.
- Czarnota, P. (2010). Krytyczna lista porostów i grzybów naporostowych Gorców [Critical list of lichens and lichenicolous fungi of the Gorce Mts]. *Ochrona Beskidów Zachodnich*, 3, 55–78.
- Czarnota, P., Glanc, K., & Nowak, J. (2005). Materiały do bioty porostów Gorców ze zbiorów Herbarium Instytutu Botaniki Polskiej Akademii Nauk w Krakowie [Materials to the biota of lichens housed in the Herbarium Instytutu Botaniki of the Polish Academy of Sciences in Kraków]. *Fragmenta Floristica et Geobotanica Polonica*, 12(2), 327–370.
- Czerepko, J., Gawryś, R., Szymczyk, R., Pisarek, W., Janek, M., Haidt, A., Kowalewska, A., Piegdoń, A., Stebel, A., Kukwa, M., & Cacciatori, C. (2021). How sensitive are epiphytic and epixylic cryptogams as indicators of forest naturalness? Testing bryophyte and lichen predictive power in stands under different management regimes in the Białowieża forest. *Ecological Indicators*, 125, 1–19. Article 107532. <https://doi.org/10.1016/j.ecolind.2021.107532>
- Di Nuzzo, L., Giordani, P., Benesperi, R., Brunialti, G., Fačkovcová, Z., Frati, L., Nascimbene, J., Ravera, S., Vallese, C., Paoli, L., & Bianchi, E. (2022). Microclimatic alteration after logging affects the growth of the endangered lichen *Lobaria pulmonaria*. *Plants*, 11(3), Article 295. <https://doi.org/10.3390/plants11030295>
- Dymytrova, L., Nadyeina, O., Hobi, M. L., & Scheidegger, C. (2014). Topographic and forest-stand variables determining epiphytic lichen diversity in the primeval beech forest in the Ukrainian Carpathians. *Biodiversity and Conservation*, 23, 1367–1394. <https://doi.org/10.1007/s10531-014-0670-1>
- Eaton, S., & Ellis, C. J. (2014). High demographic rates of the model epiphyte *Lobaria pulmonaria* in an oceanic hazelwood (western Scotland). *Fungal Ecology*, 11, 60–70. <https://doi.org/10.1016/j.funeco.2014.03.007>

- Edman, M., Eriksson, A. M., & Villard, M. A. (2008). Effects of selection cutting on the abundance and fertility of indicator lichens *Lobaria pulmonaria* and *Lobaria quercizans*. *Journal of Applied Ecology*, 45, 26–33. <https://doi.org/10.1111/j.1365-2664.2007.01354.x>
- Fałtynowicz, W. (2003). *The lichens, lichenicolous and allied fungi of Poland – An annotated checklist*. W. Szafer Institute of Botany, Polish Academy of Sciences.
- Fałtynowicz, W. (2021a). Jaka ma być ochrona gatunkowa? Część I. Ochrona gatunkowa porostów, czyli co tak naprawdę chronimy? [What is the species protection? Part I. Species protection of lichens, or what are we really protecting?]. *Wiadomości Botaniczne*, 65, Article 653. <https://doi.org/10.5586/wb.653>
- Fałtynowicz, W. (2021b). Jaka ma być ochrona gatunkowa? Część II. Porosty – stadium przypadku [What is the species protection? Part II. Lichens – A case study]. *Wiadomości Botaniczne*, 65, Article 654. <https://doi.org/10.5586/wb.654>
- Fałtynowicz, W. (2021c). Jaka ma być ochrona gatunkowa? Część III. Uwagi o potrzebie zmiany rozporządzenia o ochronie gatunkowej roślin [What is the species protection? Part III. Comments on the need to amend the plant protection regulation]. *Wiadomości Botaniczne*, 65, Article 655. <https://doi.org/10.5586/wb.655>
- Farkas, E., & Lőkös, L. (1998). *Lobaria pulmonaria* in Hungary. In S. Ya. Kondratyuk & B. J. Coppins (Eds.), *Lobarion Lichens as Indicators of the Primeval Forests of the Eastern Carpathians*. (Darwin International Workshop, 25–30 May 1998, Kostrino, Ukraine) (p. 107). Phytosociocentre.
- Fritz, Ö., & Brunet, J. (2010). Epiphytic bryophytes and lichens in Swedish beech forests – Effects of forest history and habitat quality. *Ecological Bulletins*, 53, 95–107.
- Fritz, Ö., Niklasson, M., & Churski, M. (2009). Tree age is a key factor for the conservation of epiphytic lichens and bryophytes in beech forests. *Applied Vegetation Science*, 12, 93–106. <https://doi.org/10.1111/j.1654-109X.2009.01007.x>
- Gauslaa, Y., Palmqvist, K., Solhaug, K. A., Holien, H., Hilmo, O., Nybakken, L., Myhre, L. C., & Ohlson, M. (2007). Growth of epiphytic old forest lichens across climatic and successional gradients. *Canadian Journal of Forest Research*, 37(10), 1832–1845. <https://doi.org/10.1139/X07-048>
- Gauslaa, Y., & Solhaug, K. A. (1999). High-light damage in air-dry thalli of the old forest lichen *Lobaria pulmonaria*: Interactions of irradiance, exposure duration and high temperature. *Journal of Experimental Botany*, 50(334), 697–705. <https://doi.org/10.1093/jxb/50.334.697>
- Ginszt, T., Laskowska-Ginszt, A., & Wolkowyci, M. (2022). The first observation of *Lobaria pulmonaria* (L.) Hoffm. on *Malus domestica* Borkh. in the Białowieża Forest. *Sylvan*, 166(05), 297–308.
- Glanc, K. (1960). Interesujące i rzadkie gatunki porostów z Gorców [Interesting and rare lichen species in the Gorce Mts]. *Fragmenta Floristica et Geobotanica*, 6(4), 601–608.
- Glanc, K., & Tobolewski, Z. (1960). Porosty Bieszczadów Zachodnich [Lichens of the Western Bieszczady]. *Prace Komisji Biologicznej, Poznańskie Towarzystwo Przyjaciół Nauk*, 21(4), 1–108.
- Golubkov, V. V., Bohdan, A., & Popławska, M. (2011). Nowe, rzadkie i interesujące gatunki porostów Białowieskiego Parku Narodowego [New, rare and interesting lichens of the Białowieża National Park]. *Parki Narodowe i Rezerwy Przyrody*, 30(3–4), 15–26.
- Goward, T. (1994). Notes on oldgrowth-dependent epiphytic macrolichens in inland British Columbia, Canada. *Acta Botanica Fennica*, 150, 31–38.
- Hilmo, O., Lundemo, S., Holien, H., Stengrundet, K., & Stenøien, H. K. (2012). Genetic structure in a fragmented Northern Hemisphere rainforest: Large effective sizes and high connectivity among populations of the epiphytic lichen *Lobaria pulmonaria*. *Molecular Ecology*, 21(13), 3250–3265. <https://doi.org/10.1111/j.1365-294X.2012.05605.x>
- Hofmeister, J., Hošek, J., Malíček, J., Palice, Z., Syrovátková, L., Steinová, J., & Černajová, I. (2016). Large beech (*Fagus sylvatica*) trees as ‘lifeboats’ for lichen diversity in central European forests. *Biodiversity and Conservation*, 25, 1073–1090. <https://doi.org/10.1007/s10531-016-1106-x>
- Hufty, M., & Muttenter, F. (2017). Devoted friends: The implementation of the convention on biological diversity in Madagascar. In P. G. Le Prestre (Ed.), *Governing global biodiversity* (pp. 279–309). Routledge.
- Jakubiec, Z., & Zyśk-Gorczyńska, E. (2012). Zapewnienie odpowiednich warunków zimowania niedźwiedzi w polskiej części Karpat. Wytyczne do wyznaczania rejonów gawrowania i strefowej ochrony gawr [Ensuring appropriate conditions for bear hibernation in the Polish part of the Carpathian Mountains. Guidelines for determining bear hibernation areas and protection zones around dens]. In S. Jakimiuk & N. Kryt (Eds.), *Ochrona gatunkowa rysia, wilka i niedźwiedzia w Polsce. Raport z projektu nr PL 0349* [Species protection of grey wolf, Eurasian lynx and brown bear in Poland. Report no. PL 0349] (pp. 35–52). WWF Polska.
- Jüriado, I., & Liira, J. (2010). Threatened forest lichen *Lobaria pulmonaria* – Its past, present and future in Estonia. *Forestry Studies*, 53, 15–24. <https://doi.org/10.2478/v10132-011-0086-6>
- Khanov, Z., & Pshegusov, R. (2021). Modelling of population dynamics of the protected lichen *Lobaria pulmonaria* (L.) Hoffm. in the Caucasus. *BIO Web of Conferences*, 35, Article 00015. <https://doi.org/10.1051/bioconf/20213500015>
- Kondratyuk, S. Ya., Coppins, B. J., Zelenko, S. D., Khodosovtsev, A. Ye., Coppins, A. M., & Wolseley, P. A. (1998). Lobarion lichens as indicator of primeval forests in the Ukrainian part of the proposed trilateral reserve ‘Eastern Carpathians’. In S. Ya. Kondratyuk & B. J. Coppins (Eds.), *Lobarion lichens as indicators of the primeval forests of the Eastern Carpathians*. (Darwin International Workshop, 25–30 May 1998, Kostrino, Ukraine) (pp. 64–79). Phytosociocentre.
- Kościełniak, R. (2013). Porosty Bieszczadzkiego Parku Narodowego – stan obecny i przekształcenia w ostatnim półwieczu [Lichens of the Bieszczady National Park – Present state and changes in the last 50 years]. *Monografie Bieszczadzkie*, 14, 7–348.

- Kościelniak, R., & Betleja, L. (2015). Stanowisko *Lobaria pulmonaria* (L.) w dolinie potoku Smorz k. Ustrzyki Dolnych jako przejaw rekolonizacji Bieszczadzskich lasów przez ten gatunek [Locality of *Lobaria pulmonaria* (L.) in the Smorz stream valley near Ustrzyki Dolne as an indication of recolonisation of the Bieszczady forests by this species]. *Roczniki Bieszczadzkie*, 23, 71–80.
- Kubiak, D., Biedunkiewicz, A., & Balczun, A. (2017). Diversity of lichens in forest communities of the “Pupy” Nature Reserve in the Puszcza Piska forest (NE Poland). *Polish Journal of Natural Sciences*, 32(2), 297–310.
- Kubiak, D., & Osyczka, P. (2020). Non-forested vs forest environments: The effect of habitat conditions on host tree parameters and the occurrence of associated epiphytic lichens. *Fungal Ecology*, 47, 1–13. <https://doi.org/10.1016/j.funeco.2020.100957>
- Kukwa, M., Schiefelbein, U., Czarnota, P., Halda, J., Kubiak, D., Palice, Z., & Naczka, A. (2008). Notes on some noteworthy lichens and allied fungi found in the Białowieża Primeval Forest in Poland. *Bryonora*, 41, 1–11.
- Loch, J. (2010). Gawrowanie niedźwiedzia brunatnego *Ursus arctos* w Gorczańskim Parku Narodowym w latach 1981–2010 [Hibernation of brown bear *Ursus arctos* in the Gorce National Park in the period 1981–2010]. *Ochrona Beskidów Zachodnich*, 3, 47–54.
- Matwiejuc, A. (2015). Porosty objęte ochroną strefową występujące w Polsce północno-wschodniej [Lichens protected zonal occurring in north-eastern Poland]. *Studia i Materiały Centrum Edukacji Przyrodniczo-Leśnej*, 17(3), 130–137.
- Matwiejuc, A., & Zbyryt, A. (2013). Nowe stanowisko *Lobaria pulmonaria* (Stictaceae) z apotecjami w Polsce [New locality of *Lobaria pulmonaria* (Stictaceae) with apothecia in Poland]. *Fragmenta Floristica et Geobotanica Polonica*, 20(1), 24–28.
- Mikusek, R. (2012). *Ochrona strefowa ptaków* [Zonal protection of birds]. Fundacja Wspierania Inicjatyw Ekologicznych.
- Mizera, T. (2006). 20 lat funkcjonowania ochrony strefowej w Polsce [Twenty years of the zonal protection in Poland]. *Studia i Materiały Centrum Edukacji Przyrodniczo-Leśnej*, 8/2(12), 29–53.
- Motiejūnaitė, J., Czyżewska, K., & Cieśliński, S. (2004). Lichens – Indicators of old-growth forests in biocentres of Lithuania and north-east Poland. *Botanica Lithuanica*, 10, 59–74.
- Motyka, J. (1930). Znaczenie rezerwatu karpackiej puszczy w Gorcach [The importance of the Carpathian forest reserve in the Gorce Mountains]. *Ochrona Przyrody*, 10, 58–61.
- Muir, P. S., Shirazi, A. M., & Patrie, J. (1997). Seasonal growth dynamics in the lichen *Lobaria pulmonaria*. *Bryologist*, 100(4), 458–464. <https://doi.org/10.2307/3244407>
- Nadyeina, O., Dymytrova, L., Naumovych, A., Postoyalkin, S., & Scheidegger, C. (2014). Distribution and dispersal ecology of *Lobaria pulmonaria* in the largest primeval beech forest of Europe. *Biodiversity and Conservation*, 23(13), 3241–3262. <https://doi.org/10.1007/s10531-014-0778-3>
- Nascimbene, J., Benesperi, R., Brunialti, G., Catalano, I., Vedove, M. D., Grillo, M., Isocrono, D., Matteucci, E., Potenza, G., Puntillo, D., Puntillo, M., Ravera, S., Rizzi, G., & Giordani, P. (2013). Patterns and drivers of beta-diversity and similarity of *Lobaria pulmonaria* communities in Italian forests. *Journal of Ecology*, 101, 493–505. <https://doi.org/10.1111/1365-2745.12050>
- Nascimbene, J., Brunialti, G., Ravera, S., Frato, L., & Caniglia, G. (2010). Testing *Lobaria pulmonaria* (L.) Hoffm. as an indicator of lichen conservation importance of Italian forests. *Ecological Indicators*, 10, 353–360. <https://doi.org/10.1016/j.ecolind.2009.06.013>
- Nascimbene, J., Casazza, G., Benesperi, R., Catalano, I., Cataldo, D., Grillo, M., Isocrono, D., Matteucci, E., Ongaro, S., Potenza, G., Puntillo, D., Ravera, S., Zedda, L., & Giordani, P. (2016). Climate change fosters the decline of epiphytic *Lobaria* species in Italy. *Biological Conservation*, 201, 377–384. <https://doi.org/10.1016/j.biocon.2016.08.003>
- Nilsson, S. G., Arup, U., Baranowski, R., & Ekman, S. (1995). Tree-dependent lichens and beetles as indicators in conservation forests. *Biological Conservation*, 9(5), 1208–1215. <https://doi.org/10.1046/j.1523-1739.1995.9051199.x-i1>
- Öckinger, E., Niklasson, M., & Nilsson, S. (2005). Is local distribution of the epiphytic lichen *Lobaria pulmonaria* limited by dispersal capacity or habitat quality? *Biodiversity and Conservation*, 14, 759–773. <https://doi.org/10.1007/s10531-004-4535-x>
- Orange, A., James, P. W., & White, F. J. (2001). *Microchemical methods for the identification of lichens*. British Lichen Society.
- Otálora, M. A., Martínez, I., Belinchón, R., Widmer, I., Aragón, G., Escudero, A., & Scheidegger, C. (2011). Remnants fragments preserve genetic diversity of the old forest lichen *Lobaria pulmonaria* in a fragmented Mediterranean mountain forest. *Biodiversity and Conservation*, 20, 1239–1254. <https://doi.org/10.1007/s10531-011-0025-0>
- Paoli, L., Benesperi, R., Fačkovcova, Z., Nascimbene, J., Ravera, S., Marchetti, M., Anselmi, B., Landi, M., Landi, S., Bianchi, E., Di Nuzzo, L., Lackovičova, A., Vannini, A., Loppi, S., & Guttova, A. (2019). Impact of forest management on threatened epiphytic macrolichens: Evidence from a Mediterranean mixed oak forest (Italy). *IForest – Biogeosciences and Forestry*, 12(4), 383–388. <https://doi.org/10.3832/ifer2951-012>
- Piękoś-Mirkowa, H., & Mirek, Z. (2003). Endemic taxa of vascular plants in the Polish Carpathians. *Acta Societatis Botanicorum Poloniae*, 72(3), 235–242.
- Potenza, G., Gerardi, G., Fascetti, S., & Rosati, L. (2022). Habitat fragmentation and lichen diversity in peri-urban woodlands: A case study in the municipality of Potenza (Southern Italy). *Plants*, 11(14), Article 1858. <https://doi.org/10.3390/plants11141858>
- Printzen, C., Brackel, W., Bültmann, H., Cezanne, R., Dolnik, C., Dornes, P., Eckstein, J., Eichler, M., John, V., Killmann, D., Nimis, P. L., Otte, V., Schiefelbein, U., Schultz, M., Stordeur, R., Teuber, D., & Thüs, H. (2022). Die Flechten, flechtenbewohnenden und flechtenähnlichen Pilze Deutschlands – eine überarbeitete Checkliste [Lichens, lichenicolous and allied fungi of Germany – A revised checklist]. *Herzogia*, 35, 193–393.

- Prip, C. (2018). The convention on biological diversity as a legal framework for safeguarding ecosystem services. *Ecosystem Services*, 29, 199–204. <https://doi.org/10.1016/j.ecoser.2017.02.015>
- Ranius, T., Johansson, P., Berg, N., & Niklasson, M. (2008). The influence of tree age and microhabitat quality on the occurrence of crustose lichens associated with old oaks. *Journal of Vegetation Science*, 19(5), 653–662. <https://doi.org/10.3170/2008-8-18433>
- RME. (2004). *Rozporządzenie Ministra Środowiska z dnia 9 lipca 2004 w sprawie gatunków dziko występujących grzybów objętych ochroną (Dz. U. z 2004 r., nr 168, poz. 1765)* [Regulation of the Minister of the Environment from 9 July 2004 on the wild fungi under legal protection]. <https://isap.sejm.gov.pl/isap.nsf/download.xsp/WDU20041681765/O/D20041765.pdf>
- RME. (2014a). *Rozporządzenie Ministra Środowiska z dnia 9 października 2014 w sprawie ochrony gatunkowej grzybów (Dz. U. z 2014 r., poz. 1408)* [Regulation of the Minister of the Environment from 9 October 2014 on the protection of fungi species]. <https://isap.sejm.gov.pl/isap.nsf/download.xsp/WDU20140001408/O/D20141408.pdf>
- RME. (2014b). *Rozporządzenie Ministra Środowiska z dnia 9 października 2014 w sprawie ochrony gatunkowej roślin (Dz. U. z 2014 r., poz. 1409)* [Regulation of the Minister of the Environment from 9 October 2014 on the protection of plant species]. <https://isap.sejm.gov.pl/isap.nsf/download.xsp/WDU20140001409/O/D20141409.pdf>
- RME. (2016). *Rozporządzenie Ministra Środowiska z dnia 16 grudnia 2016 w sprawie ochrony gatunkowej zwierząt (Dz. U. z 2016 r., poz. 2183)* [Regulation of the Minister of the Environment from 16 December 2016 on the protection of animals]. <https://isap.sejm.gov.pl/isap.nsf/download.xsp/WDU20160002183/O/D20162183.pdf>
- Ronnäs, C., Werth, S., Ovaskainen, O., Várkonyi, G., Scheidegger, C., & Snäll, T. (2017). Discovery of long-distance gamete dispersal in a lichen-forming ascomycete. *New Phytologist*, 216(1), 216–226. <https://doi.org/10.1111/nph.14714>
- Rubio-Salcedo, M., Marinero, S., & Martinez, I. (2015). Tree species and microhabitat influence the population structure of the epiphytic lichen *Lobaria pulmonaria*. *Fungal Ecology*, 18, 1–9. <https://doi.org/10.1016/j.funeco.2015.08.002>
- Ryś, A. (2007). Granicznik płucnik *Lobaria pulmonaria* i jego ochrona w lasach państwowych [Protection of *Lobaria pulmonaria* in state forests]. *Studia i Materiały Centrum Edukacji Przyrodniczo-Leśnej*, 9(2–3), 288–302.
- Scheidegger, C., Bilovitz, P., Werth, S., Widmer, I., & Mayrhofer, H. (2012). Hitchhiking with forests: Population genetics of the epiphytic lichen *Lobaria pulmonaria* in primeval and managed forests in southeastern Europe. *Ecology and Evolution*, 2(9), 2223–2240. <https://doi.org/10.1002/ece3.341>
- Scheidegger, C., & Clerc, P. (2002). *Rote Liste der gefährdeten Arten der Schweiz: Baum- und erdbewohnende Flechten* [The Red List of threatened species of Switzerland: Epiphytic and terricolous lichens]. Hrsg. Bundesamt für Umwelt, Wald und Landschaft BUWAL, Bern, und Eidgenössische Forschungsanstalt WSL, Birmensdorf, und Conservatoire et Jardin botaniques de la Ville de Genève CJBG. BUWAL-Reihe Vollzug Umwelt.
- Scheidegger, C., & Goward, T. (2002). Monitoring lichens for conservation: Red lists and conservation action plans. In P. L. Nimis, C. Scheidegger, & P. Wolseley (Eds.), *Lichen monitoring—Monitoring lichens* (pp. 163–181). Kluwer Academic Publishers.
- Scheidegger, C., & Werth, S. (2009). Conservation strategies for lichens: Insights from population biology. *Fungal Biology Reviews*, 23, 55–66. <https://doi.org/10.1016/j.fbr.2009.10.003>
- Singh, G., Dal Grande, F., Werth, S., & Scheidegger, C. (2015). Long-term consequences of disturbances on reproductive strategies of the rare epiphytic lichen *Lobaria pulmonaria*: Clonality a gift and a curse. *FEMS Microbiology Ecology*, 91(1), 1–11. <https://doi.org/10.1093/femsec/fiu009>
- Solon, J., Borzyszkowski, J., Bidłasik, M., Richling, A., Badora, K., Balon, J., Brzezińska-Wójcik, T., Chabudziński, Ł., Dobrowolski, J., Grzegorzczak, I., Jodłowski, M., Kistowski, M., Kot, R., Krąż, P., Lechnio, J., Macias, A., Majchrowska, A., Malinowska, A., Migoń, P., ... Ziaja, W. (2018). Physico-geographical mesoregions of Poland: Verification and adjustment of boundaries on the basis of contemporary spatial data. *Geographia Polonica*, 91(2), 143–170. <https://doi.org/10.7163/GPol.0115>
- Tuchowski, M. (2022). *Lobaria pulmonaria*, jako gatunek parasolowy dla ochrony różnorodności porostów epifitycznych w Gorcach [*Lobaria pulmonaria*, as an umbrella species in the protection of epiphytic lichen diversity in Gorce Mts] [MSc thesis]. College of Natural Sciences, University of Rzeszów.
- UNEP. (1992). *Convention on biological diversity*. <https://www.unep.org/resources/report/convention-biological-diversity-june-1992>
- Vondrák, J., Malíček, J., Palice, Z., Coppins, B., Kukwa, M., Czarnota, P., Sanderson, N., & Acton, A. (2016). Methods for obtaining more complete species lists in surveys of lichen biodiversity. *Nordic Journal of Botany*, 34(3), 1–8. <https://doi.org/10.1111/njb.01053>
- Walser, J. C., Gugerli, F., Holderegger, R., Kuonen, D., & Scheidegger, C. (2004). Recombination and clonal propagation in different populations of the lichen *Lobaria pulmonaria*. *Heredity*, 93, 322–329. <https://doi.org/10.1038/sj.hdy.6800505>
- Wąsik, K. (2016). Znaczenie ochrony strefowej *Lobaria pulmonaria* dla zachowania różnorodności gatunkowej porostów na przykładzie Gorczańskiego Parku Narodowego [The importance of the zonal protection of *Lobaria pulmonaria* for the conservation of lichen diversity on the example of Gorce National Park] [MSc thesis]. Faculty of Biology and Agriculture, University of Rzeszów.
- Werth, S. (2001). *Key factors for epiphytic macrolichen vegetation in deciduous forests of Troms county, northern Norway: Human impact, substrate, climate or spatial variation?* [Cand Scient Thesis]. Faculty of Science, University of Tromsø.
- Werth, S., Cheenacharoen, S., & Scheidegger, C. (2014). Propagule size is not a good predictor for regional population subdivision or fine-scale spatial structure in

- lichenized fungi. *Fungal Biology*, 118(2), 126–138.
<https://doi.org/10.1016/j.funbio.2013.10.009>
- Werth, S., Gugerli, F., Holderegger, R., Wagner, H. H., Csencsics, D., & Scheidegger, C. (2007). Landscape-level gene flow in *Lobaria pulmonaria*, an epiphytic lichen. *Molecular Ecology*, 16(13), 2807–2815.
- Whittet, R., & Ellis, C. J. (2013). Critical tests for lichen indicators of woodland ecological continuity. *Biological Conservation*, 168, 19–23.
<https://doi.org/10.1016/j.biocon.2013.09.011>
- Widmer, I., Dal Grande, F., Excoffier, L., Holderegger, R., Keller, C., Mikryukov, V. S., & Scheidegger, C. (2012). European phylogeography of the epiphytic lichen fungus *Lobaria pulmonaria* and its green algal symbiont. *Molecular Ecology*, 21(23), 5827–5844.
<https://doi.org/10.1111/mec.12051>
- Zawadzka, D., Drozdowski, S., Zawadzki, G., Madej, W., Pierchala, P., & Soltys, A. (2017). “Fokusowe” gatunki w ochronie przyrody w lasach [“Focal” species in nature protection in forests]. *Studia i Materiały Centrum Edukacji Przyrodniczo-Leśnej*, 19(50/1), 66–82.
- Zawadzki, G., Zawadzka, D., Soltys, A., & Drozdowski, S. (2020). Nest-site selection by the white-tailed eagle and black stork – Implications for conservation practice. *Forest Ecosystems*, 7, Article 59.
<https://doi.org/10.1186/s40663-020-00271-y>
- Zawadzki, G., Zawadzki, J., Drozdowski, S., & Zawadzka, D. (2022). The avoidance of living in the vicinity of a top predator: The coexistence of the black stork and the white-tailed eagle in NE Poland. *The European Zoological Journal*, 89(1), 1223–1237.
<https://doi.org/10.1080/24750263.2022.2134478>
- Zemanová, L., Trotsiuk, V., Morrissey, R. C., Bače, R., Mikoláš, M., & Svoboda, M. (2017). Old trees as a key source of epiphytic lichen persistence and spatial distribution in mountain Norway spruce forests. *Biodiversity and Conservation*, 26, 1943–1958.
<https://doi.org/10.1007/s10531-017-1338-4>
- Zimmermann, B., Wabakken, P., & Dötterer, M. (2003). Brown bear-livestock conflicts in a bear conservation zone in Norway: Are cattle a good alternative to sheep? *Ursus*, 14(1), 72–83. <http://www.jstor.org/stable/3872959>
- Zoller, S., Lutzoni, F., & Scheidegger, C. (1999). Genetic variation within and among populations of the threatened lichen *Lobaria pulmonaria* in Switzerland and implications for its conservation. *Molecular Ecology*, 8(12), 2049–2059.
<https://doi.org/10.1046/j.1365-294x.1999.00820.x>