

ERRATUM Int. Agrophys., 2017, 31, 419-432
doi: 10.1515/intag-2016-0059

Erratum to: Dependence of spectral characteristics on parameters describing CO₂ exchange between crop species and the atmosphere**

Bogna Uzdzička*, Marcin Stróżeczki, Marek Urbaniak, and Radosław Juszcak

Department of Meteorology, Faculty of Environmental Engineering and Spatial Planning, Poznań University of Life Sciences, Piątkowska 94, 60-649 Poznań, Poland

Received September 30, 2016; accepted May 16, 2017

*Corresponding author e-mail: bognauzdzicka@gmail.com

**Funding was provided by the project of the Polish Ministry of Science (No. 752/N-COST/2010/0) ‘Assessment of a seasonal and spatial variation of plant biophysical and spectral indices in the context of CO₂, CH₄, H₂O gas exchange between wetland, forest and arable ecosystems and the atmosphere’, 2010-2013.

Corrected Fig. 5.

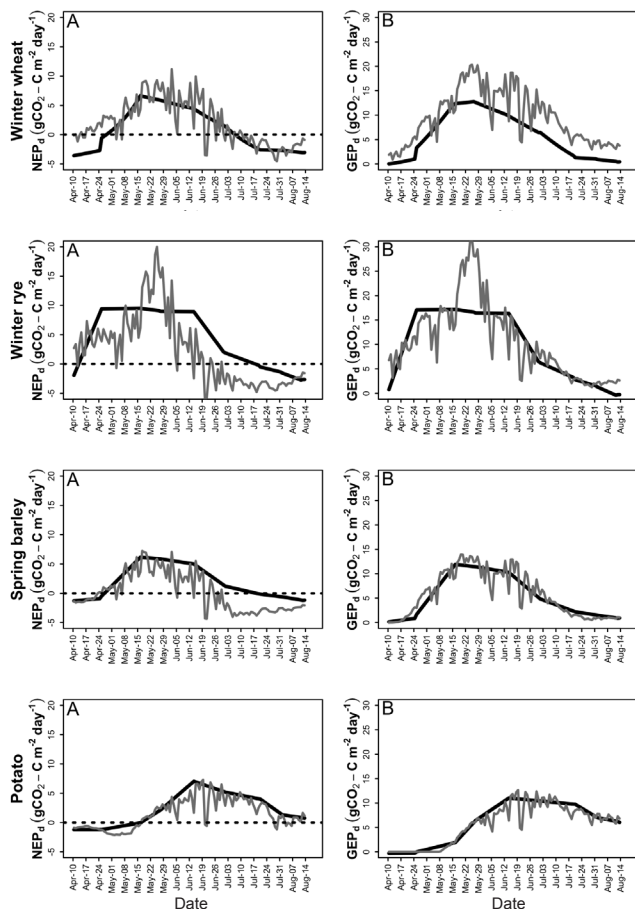


Fig. 5. NEP_d (A) and GEP_d (B) estimated for different crops based on the chamber model (grey line) and the spectral model (black line).